

**COMMISSIONERS' COURT
SPECIAL MEETING
APRIL 26, 1999**

BE IT REMEMBERED THAT THE TITUS COUNTY COMMISSIONERS' COURT met in *Special Session* on Monday, April 26, 1999, in the Titus County Courtroom with the following members present:

DANNY P. CROOKS.....COUNTY JUDGE
MIKE PRICE.....COMMISSIONER PRECINCT 1
MIKE FIELDS.....COMMISSIONER PRECINCT 2
BILLY J. THOMPSON.....COMMISSIONER PRECINCT 3
THOMAS E. HOCKADAY.....COMMISSIONER PRECINCT 4
JEAN CROVER.....DEPUTY COUNTY CLERK

ABSENT: NONE

PUBLIC AND COUNTY OFFICIALS ATTENDING MEETING:

CARL JOHNSON, AUDITOR
TIM TAYLOR, COUNTY ATTORNEY
SHERRY MARS, COUNTY CLERK

ANN RUNDLE

PHILLIP CROMWELL

**IN THE MATTER OF
APPROVING GTE TELEPHONE COMPANY BURYING
CABLE ALONG AND UNDER NW-13, NW-13B AND
GOING NORTH 412 FEET**

Motion was made by Commissioner Mike Fields and seconded by Commissioner Thomas E. Hockaday to approve GTE Telephone Company burying cable along and under NW-13, NW-13B and going north 412 feet accept to bore under roads and bridges. Motion carried unanimously. **SEE ATTACHMENT "A"**

IN THE MATTER OF
APPROVING BIDS FOR ONE TON 1999 TRUCK
& A TWO AND HALF TON 1999 TRUCK
FOR PRECINCT 3

Bids were received from Sandlin Motors, Inc. and Peters Autoplex for a one ton 1999 truck for Precinct 3.

Motion was made by Commissioner Billy J. Thompson and seconded by Commissioner Thomas E. Hockaday to approve the bid from Sandlin Motors, Inc. for the sum of \$16,997.17 for Precinct 3. Motion carried unanimously. *SEE ATTACHMENT "B"*

Motion was made by Commissioner Billy J. Thompson and seconded by Commissioner Mike Price to approve the bid from Peters Autoplex for a two and half ton 1999 truck for the sum of \$28,986.00 for Precinct 3. Motion carried unanimously. *SEE ATTACHMENT "C"*

IN THE MATTER OF
APPROVING BUDGET AMENDMENTS

None were presented.

IN THE MATTER OF
APPROVING COUNTY OFFICIAL REPORTS

Motion was made by Commissioner Mike Fields and seconded by Commissioner Mike Price to approve reports from County Auditor, Tax Assessor - Collector, District Clerk, Nortex Volunteer Fire Department, and Winfield Volunteer Fire Department. Motion carried unanimously.

IN THE MATTER OF
SIGNING PAY ORDERS & PAYING BILLS

County Attorney Tim Taylor recommended payment of the Government Records bill for recording records in the County Clerk's Office, and to go out for bids if necessary.

Motion was made by Commissioner Mike Price and seconded by Commissioner Billy J. Thompson to approve signing pay orders and paying bills. Motion carried unanimously.

IN THE MATTER OF
APPROVING PLAT FOR POINT NORTH ADDITION PHASE 3
IN PRECINCT 1

Motion was made by Commissioner Mike Price and seconded by Commissioner Thomas E. Hockaday to approve the plat for Point North Addition Phase 3 in Precinct 1. Motion carried unanimously.

IN THE MATTER OF
APPROVING DEPUTATION OF BEN ERIC REYNOLDS
AS RESERVE DEPUTY SHERIFF

Motion was made by Commissioner Billy J. Thompson and seconded by Commissioner Mike Price to approve the deputation of Ben Eric Reynolds as reserve deputy sheriff. Motion carried unanimously.

IN THE MATTER OF
APPROVING SOUTHWESTERN BELL TELEPHONE COMPANY
BURYING CABLE ALONG AND UNDER NE-21, NE-26 & NE-28
IN PRECINCT 4

Motion was made by Commissioner Thomas E. Hockaday and seconded by Commissioner Billy J. Thompson to approve Southwestern Bell Telephone Company burying cable along and under NE-21, NE-26 & NE-28 accept that all roads and bridges be bore under in Precinct 4. Motion carried unanimously. *SEE ATTACHMENT "D"*

IN THE MATTER OF
APPROVING PLAT OF SILVER CREEK ESTATES
IN PRECINCT 1

Motion was made by Commissioner Mike Price and seconded by Commissioner Thomas E. Hockaday to approve the plat of Silver Creek Estates in Precinct 1. Motion carried unanimously.

Commissioner Mike Fields reported that Titus County and The City of Mt. Pleasant is planning a public auction on May 29th, 1999.

Commissioner Mike Fields said, "I would like to recognize Darlene Crooks for the time she spent typing the Titus County Employee Handbook at no charge to the county. We appreciated her help."

IN THE MATTER OF
EXECUTIVE SESSION

The Court went into executive session at 9:45 a.m. and reconvened at 10:00a.m. No action was taken.

IN THE MATTER OF
ADJOURNMENT

Motion was made by Commissioner Billy J. Thompson and seconded by Commissioner Mike Fields to adjourn. Motion carried unanimously.

VOL 26 PAGE 139GTE Telephone Operations
Central Area

RECEIVED

APR 13 1999

TITUS COUNTY JUDGE

The Honorable Commissioners Court

County of TITUSMT. PLEASANT, Texas 75455ROW 2 - TITUS County - WINFIELD, Texas
3001AV NO#

Formal notice is hereby given that General Telephone Company Central Area proposes to place a buried telephone cable along the right-of-way of a TITUS County Road.

Attached are five copies of Form ED-135, "Notice of Proposed Installation Buried Cable", with sketches showing in detail a more exact location of this proposed construction. The new cable to be placed within 5' feet of the right-of-way at all locations possible, and at a minimum depth of 30" inches.

General Telephone Company Central Area agrees to assume liability for any damage to the roadway and/or right-of-way which may be caused from this construction.

In the event subsequent construction in connection with the repair, widening or improvement of the present roadway may require the lowering, revamping or relocation of the cable, General Telephone Company Central Area will bear all expense of such lowering, revamping or relocating of the facilities.

If additional information is required, please notify:

TOM SANDERS
P.O. BOX 498
1121 Shannon Road
Sulphur Springs, Texas 75483
Telephone No. 903-885-1741

ATT (3)

A part of GTE Corporation

9

VOL 26 PAGE 140

NOTICE OF COMMUNICATION LINE INSTALLATION

DATE 4-7-99

TO THE COMMISSIONER'S COURT OF TITUS COUNTY

ATTENTION COUNTY JUDGE:

Formal notice is hereby given that GTE SOUTHWEST INCORPORATED will construct a communication line within the right-of-way of a County Road in TITUS County, TEXAS as follows: GTE will place a Buried Telephone Cable under and along the East Right of Way of Titus County Road NW13 starting at the Junction of NW13 and NW13B and going North for 412'

The location and description of this line and associated appurtenances is more fully shown by Five copies of drawings attached to this notice. The line will be constructed and maintained on the County Road right-of-way in accordance with governing laws.

Notwithstanding any other provision contained herein, it is expressly understood that tender of this notice by GTE Southwest Incorporated does not constitute a waiver, surrender, abandonment or impairment of any property rights, franchise, easement, license, authority, permission, privilege or right now granted by law or may be granted in the future and any provision or provisions so construed shall be null and void.

Construction of this line will begin on or after 5-17 1999.

GTE Southwest Incorporated

BY Billy R. Painter
BILLY R. PAINTER 903-885-1743

REF NO: 3P001AV
EXCHANGE: Winefield

ADDRESS P.O. BOX 498

SULPHUR SPRINGS, TX 75483

ISSUED 11-21-77
EFFECTIVE 10-1-76
DOCKET 10



GENERAL
TELEPHONE
COMPANY
OF THE
SOUTHWEST

TEXAS GENERAL EXCHANGE TARIFF
MAP SUPPLEMENT SECTION 6

WINFIELD, TEXAS
Exchange Area Boundary

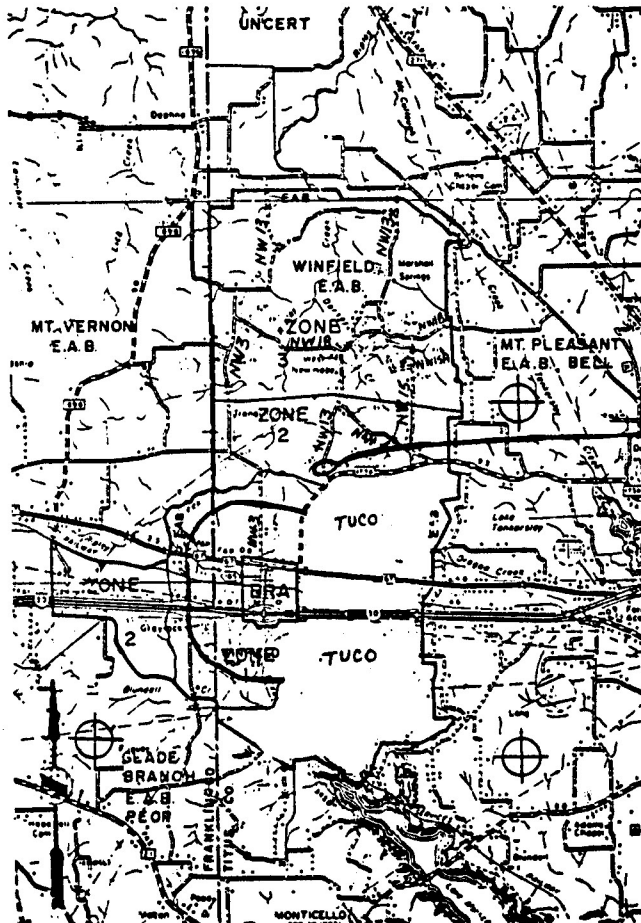
FIRST REVISED
CANCELLING ORIGINAL

SHEET NO. 286A
SHEET NO. 286A

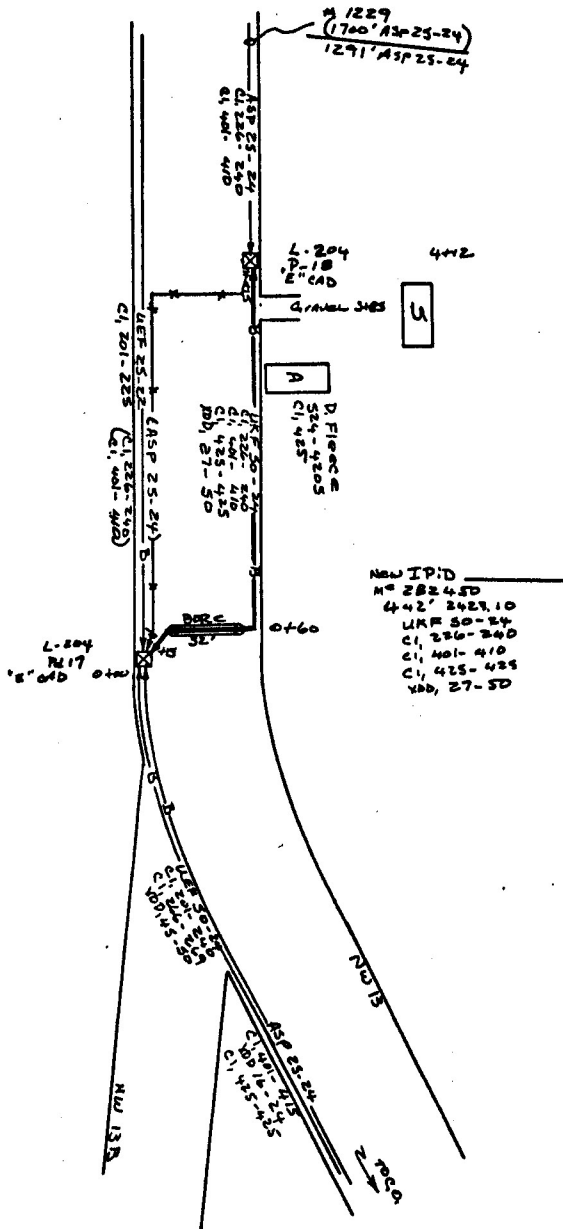
SCALE 1 inch = 2 Mi.

ALL BOUNDARIES ARE 600 FEET FROM
ROADS UNLESS OTHERWISE NOTED

R. REX BAILEY
VICE PRESIDENT-REVENUE REQUIREMENTS



DATE 4/20/83	
BY J. L. LUTZ	DATE 4-7-93
BY J. L. LUTZ	DATE 4-7-93
SHEET 1 OF 1	
PROJECT 3001AV	
DTE Telephone Operations	
WIND EISEN, TX 5240	
PLANS BOARD CALLS 5240	
BORRERS	



D10408



Sandlin MOTORS, INC.

N. Jefferson at Hwy. 67 — P.O. Box 32
Phone (Area Code 903) — 572-3656
MT. PLEASANT, TEXAS 75456-0032

Geo



April 8, 1999

Commissioners Court of Titus County

Re: 1 Ton Truck Bid as per Attached Specifications

Bid Amount \$16,997.17 as per attached specifications.
Plus \$250 for a spare tire and wheel.

Thank you for the opportunity to bid this vehicle.

Sincerely,

A handwritten signature in dark ink, appearing to read "Joe Sandlin Jr.".

Joe Sandlin Jr
Sandlin Motors Inc



1999 TRUCK, 1 TON 2 WD
SPECIFICATIONS

VOL 26 PAGE 144

WHEEL BASE	• 135.5 INCH
BATTERY	• HD 600 CCA
BRAKES	• 4 WHEEL ANTILOCK
ENGINE	• VORTEC 5700 V-8 SFI
FUEL CAPACITY	• 40 GALLON
GENERATOR	• 100 AMP
STEERING	• SPEED SENSITIVE, POWER
FRONT SUSPENSION	• INDEPENDENT COIL
REAR SUSPENSION	• MULTI LEAF SPRINGS
TRANSMISSION	• 5 SPEED
HEADLAMPS	• SINGLE RECTANGULAR HALOGEN
MIRRORS	• BLACK BREAK-A-WAY OSRV
WIPERS	• INTERMITTENT WINDSHIELD
FLOOR COVERING	• COLOR KEYED RUBBER
GAUGES	• TRIP ODOMETER, OIL PRESSURE
GLASS	• SOLAR RAY TINTED, ALL WINDOWS

HEADLINER

RADIO

SEATS

TIRES

DRIVE LINE

- FULL COLOR KEYED CLOTH
- AM/FM STEREO WITH SEEK/SCAN
- VINYL BENCH
- LT 225/75R- 16 ALL SEASON
- DUAL REAR WHEEL
- 10,000 LB. GVWR
- 4:10 REAR AXLE RATIO

VOL 26 PAGE 146 Ft. Worth County
 Prepared for: Attn: William White,
Business Mgr.

Prepared by:
 PAT YOUNG
 PETERS CHEVROLET-CHRYSLER-JEEP
 P O BOX 2829
 201 S SPUR 63
 LONGVIEW, TX 75605-2829
 Phone: (903) 757-3720
 Fax: (903) 236-4806



CHEVROLET Vehicle Summary

CODE	MODEL	MSRP
CC31003	1999 2WD Regular Cab Chassis Cab, 135.5" WB	20,149.00

STANDARD EQUIPMENT - CHASSIS FEATURES

Battery: Heavy-Duty 600 CCA
 Brakes: 4-Wheel Anti-Lock
 Engine: Vortec 5700 V8 SFI
 Fuel Capacity: 40 Gallon
 Generator: 100 AMP
 Steering: Speed Sensitive, Power (EVO)
 Suspension Frt: Independent Coil
 Suspension Rr: Multi-Leaf Springs
 Transmission: 5-Speed Manual w/OD

STANDARD EQUIPMENT - EXTERIOR TRIM & FEATURES

Bumper Front: Chrome
 Grille: Molded, Painted Argent
 Headlamps: Single Rectangular Halogen
 Lights: Daytime Running
 Mirrors: Black Break-A-Way OSRV
 Wheels: Silver Painted
 Wipers: Intermittent Windshield
 Wire Harness: 8 Lead Trailering

STANDARD EQUIPMENT - INTERIOR TRIM & FEATURES

Assist Handles: Passenger
 Cupholders: Dual in Dash
 Floor Covering: Color-Keyed Rubber
 Gauges: Trip Odometer, Oil Pressure
 Glass: Solar Ray Tinted, All Windows
 Headliner: Full Color-Keyed Cloth
 Lighting: Dome w/LH & RH Door Switch
 Power Points: Dual Covered
 Radio: AM/FM Stereo w/Seek-Scan, Clock
 Scootchgard: All Cloth & Carpet Surfaces
 Seats: Vinyl Bench Seat
 Security: Passlock, Theft Deterrent
 Steering Wheel: Simulated Leather
 Sunshades: Cloth Covered w/RH Mirror
 Warning Tone: Key-In-Ignition Buzzer

STANDARD EQUIPMENT - SAFETY FEATURES

Active (Manual) Front Lap/Shoulder Belt
 Active (Manual) Rear Lap/Shoulder Belt
 Antilock Brakes, 4-Wheel

SPUR 63 P.O. BOX 2829
LONGVIEW, TEXAS 75606

(903) 757-3720
 (800) 657-8559
 FAX (903) 236-4806
 Res. (903) 757-3087

Pat Young
 Fleet & Commercial Sales Manager

Prepared for:

VOL 26 PAGE 147

Prepared by:
PAT YOUNG
PETERS CHEVROLET-CHRYSLER-JEEP
P O BOX 2829
201 S SPUR 63
LONGVIEW, TX 75608-2829
Phone: (903) 757-3720
Fax: (903) 238-4806

CODE	STANDARD EQUIPMENT - SAFETY FEATURES	MSRP
	Brake Audible Wear Indicator	
	Brake/Transmission Shift Interlock	
	Center High-Mounted Stop Lamp	
	Crush Zones, Front and Rear	
	Daytime Running Lamps	
	Emergency Locking Belt Retractors	
	Energy-Absorbing Steering Column	
	Halogen Headlamps	
	Head Restraints, Front	
	Laminated Windshield Glass	
	Passive Theft Deterrent	
	Side Door Beams	
	Side Window Defoggers, Front	
	Windshield Wipers, Intermittent	
1SM	Equipment Group 1SM	N/C
1SZ	Preferred Equipment Group Discount	N/C
	Tire Weight Tax - Model	N/C
	Base Decor	N/C
	Chassis Cab Body Code	N/C
R05	Dual Rear Wheels	N/C
FE9	Federal Emission Requirements	N/C
C7A	10,000 lbs GVWR	N/C
L31	Vortec 5700 SFI V8	N/C
MW3	5-Speed Manual w/Deep Low & OD, HD	N/C
GT5	4.10 Rear Axle Ratio	N/C
	Standard Silver Painted Wheels	N/C
XHP	LT225/75R-16/D All Season Blackwall	N/C
	Tire Weight Tax - Front Tires	N/C
YHP	LT225/75R-16/D All Season Blackwall	N/C
	Tire Weight Tax - Rear Tires	N/C
A52	Vinyl Bench Seat	N/C
YG6	Air Conditioning not Desired	N/C
	AM/FM Stereo w/S&S, and Clock	N/C
VK3	Front License Plate Bracket	N/C
U01	Roof Marker Lamps	N/C
	Special Paints Not Desired	N/C
ZY1	Solid Paint	N/C
50U	Summit White	N/C
13V	Gray Vinyl	N/C
	SUBTOTAL	20,149.00
	ADJUSTMENTS	0.00
	DESTINATION CHARGE	640.00
	TOTAL PRICE (\$)	20,789.00

EPA City: N/A mpg
EPA Highway: N/A mpg

Net Selling Price

17,816.00

These prices may not reflect the ultimate vehicle cost, in view of future manufacturer rebates, allowances, incentives, etc. Prices and specifications subject to change without notice. Federal, state and local taxes extra. An asterisk (*) indicates that the options have been altered by the dealer. All sales prices established solely by dealer. The graphic printed on this report may not reflect the vehicle chosen.

Revised 03/10/1999

Pat Young

WHEEL BASE	135.5 INCH
BATTERY	HD 600 CCA
BRAKES	4 WHEEL ANTILOCK
ENGINE	VORTEC 5700 V-8 SFI
FUEL CAPACITY	40 GALLON
GENERATOR	100 AMP
STEERING	SPEED SENSITIVE, POWER
FRONT SUSPENSION	INDEPENDENT COIL
REAR SUSPENSION	MULTI LEAF SPRINGS
TRANSMISSION	5 SPEED
HEADLAMPS	SINGLE RECTANGULAR HALOGEN
MIRRORS	BLACK BREAK-A-WAY OSRV
WIPERS	INTERMITTENT WINDSHIELD
FLOOR COVERING	COLOR KEYED RUBBER
GAUGES	TRIP ODOMETER, OIL PRESSURE
GLASS	SOLAR RAY TINTED, ALL WINDOWS
HEADLINER	FULL COLOR KEYED CLOTH
RADIO	AM/FM STEREO WITH SEEK/SCAN
SEATS	VINYL BENCH
TIRES	LT 225/75R- 16 ALL SEASON
DRIVE LINE	DUAL REAR WHEEL 10,000 LB. GVWR 4:10 REAR AXLE RATIO

Prepared for:

Titus County
Attn: William White
Business Mgr.

Prepared by:

PAT YOUNG
 PETERS CHEVROLET-CRYSLER-JEEP
 P O BOX 2829
 201 S SPUR 63
 LONGVIEW, TX 75606-2829
 Phone: (903) 757-3720
 Fax: (903) 236-4806

SPECIAL TRUCKS

CHEVY TRUCK

Vehicle Summary



CODE	MODEL AND FACTORY OPTIONS	MSRP
7000	1999 C7H042	30,250.00

STANDARD EQUIPMENT

Ashtray, built in to lower instrument panel.

Battery box located on right hand side under cab, has non-skid perforated top.

Location allows for short starter cable as starters are R.H. engine mounted.

Circuit breakers Non-cycling remote reset, provides protection from overloads.

Replaces all the fuses in the panel fuse block.

Instrument cluster is backlighted for easier reading with illuminated gauge pointers, electric speedometer (MPH & KPH), odometer (7 digit "million mile"), coolant temperature gauge, voltmeter, oil pressure gauge, fuel gauge & provisions for up to 17 telltale warning lights.

Coat hook, right hand

Interior colors, same as the exterior lower color. Instrument panel is molded plastic. Instrument cluster face, steering wheel column and controls are black.

Cab construction, robotically assembled & welded cab for improved control of dimensions. All panels, except roof, are two-sided galvanized steel to resist corrosion.

Cowl/dash, one piece dash panel welded in place & features improved sealing against water leaks. Bolted engine/transmission cover is fiberglass with acoustical & heat insulation.

Dash pad, gray padded grained instrument panel pad.

Door, frame formed from one steel piece for strength. Hinges are reinforced and welded to both door and frame. Increased door entry area for easier entry and exit.

Floor mat, vacuum-formed black, heavy duty rubber. Reinforced in heavy foot wear area.

Cab framing, reinforced floor is welded to sill sides, making a solid foundation.

Rear cross sill forms rigid box section when welded to floor panel & side members.

Vortec 7400MD Gas V8 SPFI engine Includes: Fuel System: Sequential Port Fuel Injection. Recirculatory fuel system with high pressure pump in tank (29 psi). Fuel injection electronically controlled by onboard computer system. Cooling: 26 qt. capacity, dual 195 degrees F. thermostats, 9 lb. pressure cap. Coolant expansion/recovery bottle incorporated in closed cooling system. DEX-COOL(R) Long Life Cooling.

Drain plug: Magnetic.

Fan: 22" 7 or 9 blade nylon, Eaton viscous drive.

Filter, fuel: In-line replaceable element. Mounted in component box.

Filter, oil: Full-flow 1.4 qt. spin-on type. Governor: Integral electronic 4000 rpm

Ignition: High Energy Ignition with Electronic Spark Control.

Exhaust: Single L.H. stainless steel exhaust with catalytic converter mounted rearward of muffler.

Starter: Heavy Duty Delco Remy PG260 Series.

SPUR 63 PO BOX 2829
 LONGVIEW TEXAS 75606

Peters
AUTOPLEX

GM
CHEVROLET
BUICK
PONTIAC
OLDSMOBILE
SAAB
SCION
TOYOTA
YAMAHA

Geo
Jean
Jeep
Truck

(903) 757-3720
 (800) 657-8559
 FAX (903) 236-4806
 Res. (903) 757-3087

Pat Young
 Fleet & Commercial Sales Manager

Prepared for:

Prepared by:
 PAT YOUNG
 PETERS CHEVROLET-CRYSLER-JEEP
 P O BOX 2829
 201 S SPUR 63
 LONGVIEW, TX 75608-2829
 Phone: (903) 757-3720
 Fax: (903) 236-4806

CODE MODEL AND FACTORY OPTIONS

MSRP

STANDARD EQUIPMENT

Road Speed Governor: 75 mph maximum.
 Door glass, one piece flush glass.
 Glove box, color-keyed to interior trim with soft PVC material covering door.
 Includes built in beverage holders on back side of door.
 Grille, molded plastic, dark argent (dark gray).
 Cab assist entry handles. Black molded R.H. & L.H. 11" handles.
 Horn, single electric mounted behind bumper. Steering wheel activated.
 Instrument panel includes head lamp/park lamp/clearance lamp switch,
 instrument panel dimmer switch, slide type heater & defroster controls with fan switch.
 Insulation, molded fiberglass insulation with sound barrier. Covers cab side of dash panel. Fiber insulation covering underneath floor mat. Bonded to interior trim panels, cowl kick, R.H. & L.H. rear corner panels, and upper window panels.
 Door latch, squeeze type.
 Lights, exterior Standard Daytime running lights with halogen head lamps.
 These dual 5"x 8" headlamps are mounted in a housing which is an integral part of the hood shroud.
 Front fender mounted turn signals and side marker lamps with shock mounted bulbs.
 Five roof mounted clearance lamps.
 Two separate rear lamp assemblies with shock mounted bulbs serve for the following: tail lamps, stop/turn signals, back-up lights and license plate illumination.
 Switching of all marker lights is via the headlamp switch for truck application or with a dash mounted switch for tractor applications.
 Lighting, interior dome lamp is activated by left hand door switch or by instrument panel dimmer switch.
 Door locks, slide type with keyless locking feature.
 Mirrors, dual 7" x 16" with black molded heads & galvanized brackets painted black.
 Molding, hidden drip molding on inside of door frame.
 Cab mounts, four-point with two rear mounts located centrally to reduce torsion input from frame.
 Rear window, solid modular flush design with 981 square inch glass area.
 Window is solid tempered safety glass.
 Roof, double-wall construction.
 Safety belts, two lap/shoulder assemblies with retractors and one lap belt in center position with no retractor.
 Shifter boot, double wall for noise suppression. Includes built-in air/electrical harness provisions.
 Steering column Includes multi-function switch with fingertip control of headlamp high beam, turn signals, hazard flasher switch and windshield wipers/washers.
 Sunvisors, left hand and right hand vinyl covered, color-coordinated with interior trim choice.
 Door trim, grained molded plastic panels, color-keyed to interior with integral vinyl covered armrests.
 Power air cab ventilation Provides increased driver comfort by drawing in outside air and distributing through four air ducts within the cab.
 Steering wheel is black, 18" diameter soft touch.
 Windshield, bonded to the frame for a water-tight seal. Windshield area is approximately 1,739 square inches.
 Windshield wipers, electric two-speed Include fluidic window washer with 1 gallon washer reservoir located on firewall.

CHEVY TRUCKS



Prepared for:

Prepared by:

PAT YOUNG

PETERS CHEVROLET-CHRYSLER-JEEP

P O BOX 2829

201 S SPUR 83

LONGVIEW, TX 75606-2829

Phone: (903) 757-3720

Fax: (903) 238-4806

CODE MODEL AND FACTORY OPTIONS

MSRP

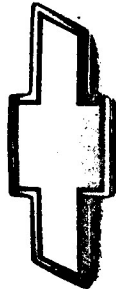
STANDARD EQUIPMENT

Standard sloped hood (RPO T40). Fenders cannot be replaced independently.

Hood is not available with access panels BQC or stationary grill GRW. Hood has integral grille and tilts forward as one. This hood is not available with the following engines: LSZ, LQV, LQW, LRR, LRS, LQX, or LRT.

RQ2	Truck Application.	N/C
JE3	ABS Hydraulic split brake system.	N/C
LP4	7.4 L Vortec 7400 V8 Gas, SPFI 210 hp	N/C
NB5	Single horizontal exhaust system.	N/C
KRG	Dry type air cleaner, AC brand.	N/C
TM1	Single battery, 800 cold cranking amps	N/C
K68	105 amp alternator.	N/C
MSC	5 speed, FS4205B Fuller soft fourth.	N/C
	Clutch, 13" (310 mm) Spicer push type.	N/C
FL1	8,100 lb capacity front axle.	N/C
F14	8,100 lb front suspension. Tapered leaf	N/C
HZT	17,850 lb Spicer Eaton 19050T axle.	725.00
GP1	23,500 lb rear suspension. Multi leaf	55.00
G60	Auxiliary springs, single tapered leaf.	85.00
038	Ratio: 2 speed 6.57/9.14	N/C
EG4	157" Wheelbase, 84" CA, 135" CE	72.00
FD0	50,000 psi yield strength steel frame.	N/C
F08	Reinforcement for 50/80,000 psi frame.	225.00
	Standard bumper, painted dark argent	N/C
V76	Front tow hooks, two.	40.00
NE5	50 (U.S.) gallon R.H. step fuel tank.	N/C
T40	Sloped Hood	N/C
C60	Integral air conditioning.	650.00
U37	Ashtray mounted cigarette lighter.	15.00
U16	Engine tachometer	85.00
A11	Tinted-Solar Ray glass, all windows.	30.00
UM7	Delco AM-FM Stereo radio	250.00
ANZ	Full width bench seat.	N/C
	No Passenger Seat w/Full Bench Front.	N/C
ZY1	Solid color exterior paint.	N/C
12L	Upper paint color - White	N/C
12U	Upper paint color - White	N/C
82V	Vinyl interior trim - Medium Dark Gray.	N/C
	Radial Tubeless	N/C
XWJ	10R 22.5 F (12 Ply).	127.00
R4L	Michelin Brand Front Tires.	N/C
R3B	XZE	N/C
	Radial Tubeless	N/C
YWJ	10R 22.5 F (12 Ply).	254.00
S4L	Michelin Brand Rear Tires.	N/C
S3B	XZE	N/C
	Steel Disc 10-Hole Hub Pilot Front.	N/C
QH3	22.5 x 7.50 Accuride.	N/C
	Steel Disc 10-Hole Hub Pilot Rear.	N/C
QH4	22.5 x 7.50 Accuride.	N/C
	Painted disc wheels - Gray (E-Coat).	N/C
	SUBTOTAL	32,863.00

CHEVY TRUCKS



Prepared by:
PAT YOUNG
PETERS CHEVROLET-CHRYSLER-JEEP
P O BOX 2829
201 S SPUR 63
LONGVIEW, TX 75606-2829
Phone: (903) 757-3720
Fax: (903) 236-4806

ADJUSTMENTS	0.00
TIRE WEIGHT TAX (TWT)	112.14
DESTINATION CHARGE	820.00
TOTAL PRICE (\$)	33,795.14

FRONT GAWR: 8,100 lb
REAR GAWR: 17,850 lb
TOTAL GVWR: 25,950 lb

These prices may not reflect the ultimate vehicle cost, in view of future manufacturer rebates, allowances, incentives, etc. Prices and specifications subject to change without notice. Federal, state and local taxes extra. An asterisk (*) indicates that the options have been altered by the dealer. All sales prices established solely by dealer. The graphic printed on this report may not reflect the vehicle chosen.

Revised 02/10/1999

Net Selling Price \$28,986.00

Patty

Too late to order 1999 Truck
This truck available for delivery
with in one week

CHEVY TRUCKS



RQ2	Truck Application.
BRAKE SYSTEM	
JE3	ABS Hydraulic split brake system
ENGINE	
LP4	7.4 L Vortec 7400 V8 Gas, SPFI 210 hp
ENGINE EQUIPMENT	
NB5	Single horizontal exhaust system.
KRG	Dry type air cleaner, AC brand
CODE REAR TIRE PROFILE	
Radial Tubeless	
REAR TIRE SIZE	
YUE	9R 22.5 F (12 Ply)
REAR TIRE BRAND	
S4L	Michelin Brand Rear Tires.
REAR TIRE TREAD	
S3B	XZE
FRONT WHEEL TYPE	
Steel Disc 10-Hole Hub Pilot Front.	
FRONT WHEEL SIZE	
QH3	22.5 x 7.50 Accuride.
REAR WHEEL TYPE	
Steel Disc 10-Hole Hub Pilot Rear.	
REAR WHEEL SIZE	
QH4	22.5 x 7.50 Accuride.
ADDITIONAL WHEEL EQUIPMENT	
Painted disc wheels - Gray (E-Coat).	

FRONT GAWR: 7,000 lb
REAR GAWR: 17,200 lb
TOTAL GVWR: 24,200 lb

Specifications subject to change without notice. The graphic printed on this report may not reflect the vehicle chosen.

Revised 12/29/1998

CODE	ENGINE ELECTRICAL
TM1	Single battery, 600 cold cranking amps
K68	105 amp alternator

TRANSMISSION AND EQUIPMENT

MSC	5 speed, FS4205B Fuller soft fourth. Clutch, 13" (310 mm) Spicer push type.
-----	--

FRONT AXLE AND EQUIPMENT

FL1	8,100 lb capacity front axle
F14	8,100 lb front suspension. Tapered leaf

REAR AXLE AND EQUIPMENT

HZT	17,850 lb Spicer Eaton 1905OT axle.
GN0	19,000 lb rear suspension. Multi leaf.
005	Ratio. 2 speed 4.56/0.34

CHASSIS EQUIPMENT

EG4	157" Wheelbase, 84" CA, 135" CE
FD0	50,000 psi yield strength steel frame.

ADDITIONAL CHASSIS EQUIPMENT

PZB	Standard bumper, painted dark argent 35 (U.S.) gallon L.H. step fuel tank.
-----	---

CAB EQUIPMENT

T40	Sloped Hood
DF0	Outside mirrors, Stainless steel.
UM7	Delco AM-FM Stereo radio
ANZ	Full width bench seat. No Passenger Seat w/Full Bench Front.

PAINT AND INTERIOR TRIM

ZY1	Solid color exterior paint
12L	Upper paint color - White
12U	Upper paint color - White
82V	Vinyl Interior trim - Medium Dark Gray.

FRONT TIRE PROFILE

	Radial Tubeless
--	-----------------

FRONT TIRE SIZE

XUE	9R 22 5 F (12 Ply).
-----	---------------------

FRONT TIRE BRAND

R4L	Michelin Brand Front Tires
-----	----------------------------

FRONT TIRE TREAD

R3B	XZE
-----	-----

4655868

Plata 3-6

APPLICATION FOR PERMIT

TO: COMMISSIONERS COURT
Mt. Pleasant, Texas 75455

Application is hereby made by Southwestern Bell Telephone Company

for permission to lay buried line along/under that certain segment of the

county road in Precinct # Four (4) at the following location(s):

*Place + bore across + along HELL 21,
26 + 28 as shown on attached drawings.*

Respectfully submitted,

C. D. Prince 4-12-99

Manager-Engineer Design

Date

307 N. Van Buren

Mt. Pleasant, Texas 75455

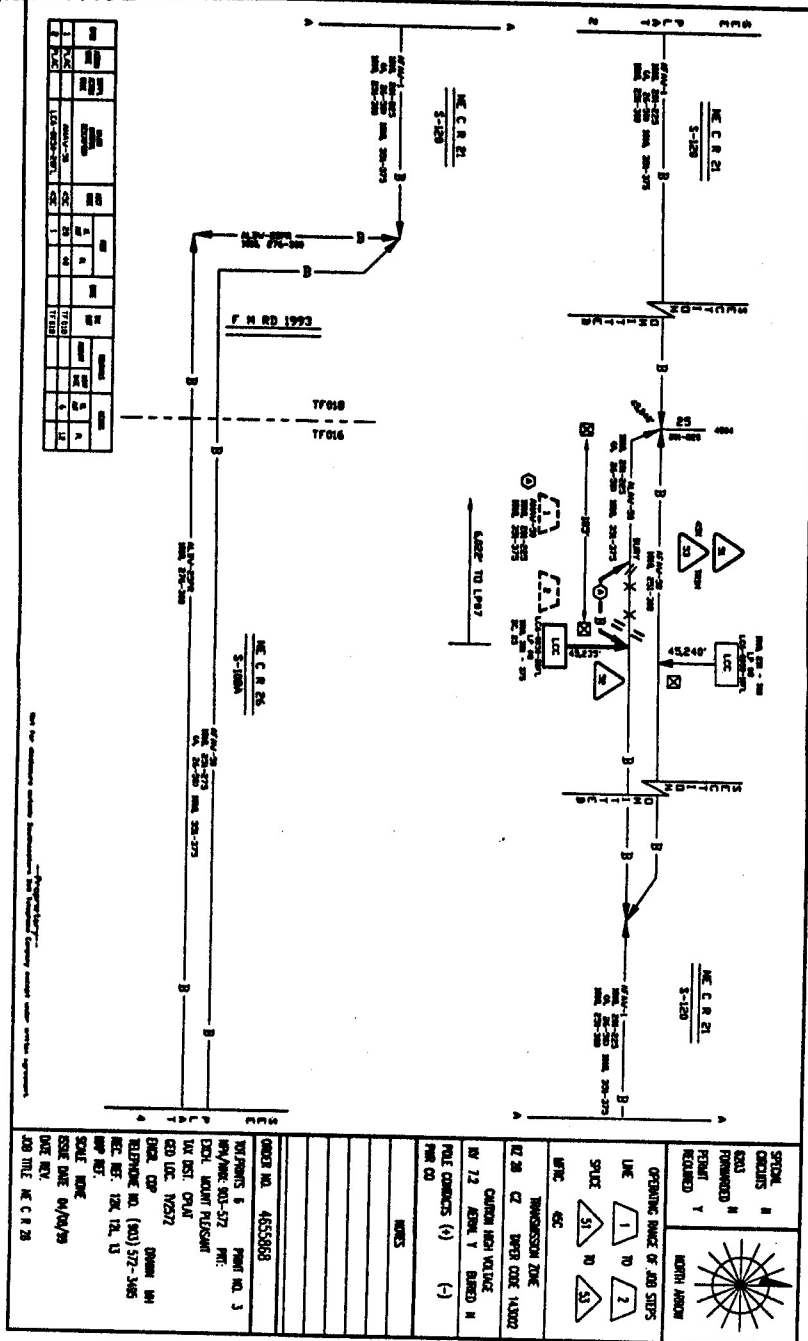
(903)572-3495

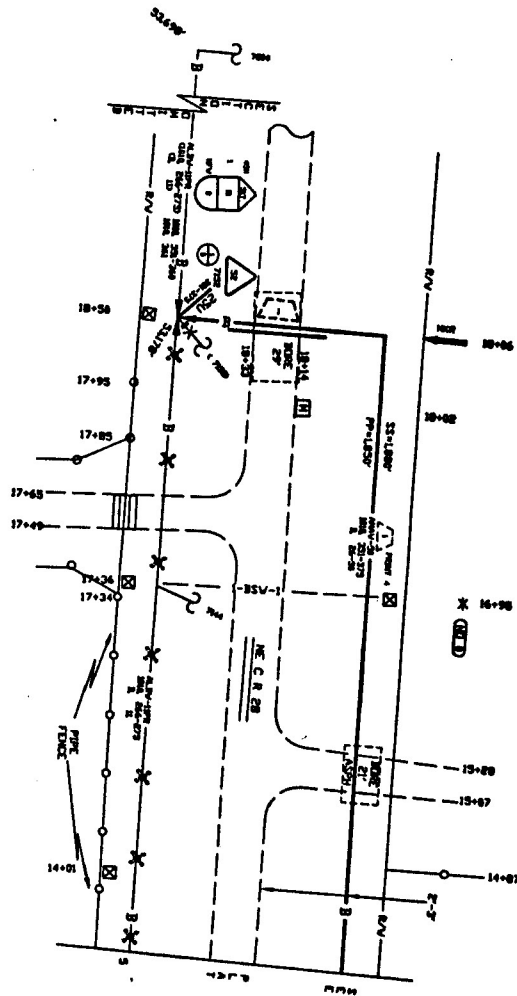
APPROVED DENIED

Daryl C. Kirk
COUNTY JUDGE

04-26-99

Date





SPECIAL INSTRUCTIONS 1. ALL INFORMATION IS TO BE FORWARDED TO THE RELEVANT Y NORTH AMERICA	OPERATING INSTRUCTIONS 1. LINE 1 TO 1 2. STATE 51 TO 52 3. WPC DEC 4. TRANSMISSION ZONE 5. TX ZONE 12 UPER CODE 14000 6. CAUTION HIGH VOLTAGE 7. HV 12 REPLY Y BUND M 8. FOLD CONTACTS (+) (-) 9. PER CD 10. NOTES	ORDER NO. 4655868 TOTAL PAGES 6 ORDER NO. 501-572 PRE: COUN. NUMBER FLEWING IN REG. 19716 CDD LOC. 10252 CDDZ. CDD TELEPHONE NO. (800) 572-5868 REG. NO. 134 & 135 DAY REF: SCALE 1:1000 DATE REC. 04/04/79 DATE REC. JOB TITLE MCT 228
--	--	--

**COMMISSIONERS' COURT
SPECIAL MEETING
MAY 6, 1999**

BE IT REMEMBERED THAT THE TITUS COUNTY COMMISSIONERS' COURT met in *Special Session* on Thursday, May 6, 1999, in the Titus County Courtroom with the following members present:

MIKE PRICE.....COMMISSIONER PRECINCT 1
MIKE FIELDS.....COMMISSIONER PRECINCT 2
BILLY J. THOMPSON.....COMMISSIONER PRECINCT 3
THOMAS E. HOCKADAY.....COMMISSIONER PRECINCT 4
JEAN CROVER.....DEPUTY COUNTY CLERK

ABSENT: DANNY P. CROOKS, COUNTY JUDGE

PUBLIC AND COUNTY OFFICIALS ATTENDING MEETING:

CARL JOHNSON, AUDITOR
TIM TAYLOR, COUNTY ATTORNEY

**IN THE MATTER OF
APPROVING PURCHASE OF
LOTS 3A, 4, 5, 6A IN CITY BLOCK 16,
CITY OF MT.PLEASANT**

County Attorney, Tim Taylor said, "This property is directly across from Billy Craig's Service Station. At present Gulfco Finance, Sharon's Florist and another business are tenants in the buildings. It is on the tax rolls as Lots 3A, 4, 5, 6A in City Block 16 of the City of Mt. Pleasant and owned by Billy and Martha Craig. May 7, 1999 at 10:00 a.m. has been set for the signing date upon approval of the Court for the purchase of this property. We will need to appoint someone to represent the County at the signing of the papers, due to the fact Judge Crooks is recovering from surgery this week."