

**COMMISSIONERS' COURT
REGULAR MEETING
NOVEMBER 9, 1998**

BE IT REMEMBERED THAT THE TITUS COUNTY COMMISSIONERS' COURT met in *Regular Meeting* on Monday, November 9, 1998, in the Titus County Courtroom with the following members present:

MIKE PRICE.....COMMISSIONER PRECINCT 1
MIKE FIELDS.....COMMISSIONER PRECINCT 2
BILLY J. THOMPSON.....COMMISSIONER PRECINCT 3
THOMAS E. HOCKADAY.....COMMISSIONER PRECINCT 4
JEAN CROVER.....DEPUTY COUNTY CLERK

ABSENT: DANNY P. CROOKS, COUNTY JUDGE

PUBLIC AND COUNTY OFFICIALS ATTENDING MEETING:

CARL JOHNSON, AUDITOR
KEN SCHINDLEY, CHIEF DEPUTY SHERIFF

JIM ROBERTS
JIMMY D. BRISCOE
BRUCE LOUSBERG
JACKSON SMITH
JUSTIN GLENN
J. L. SMITH
FRED MOSS
TOMMY BLAIR
TRACEY WRIGHT

STACEY WALPOLE
KERRY WOOTTEN
RAY McCANN
TREY SMITH
JOE RDEFARN
ERIC LYNCH
BENNIE CUMMINGS
CARL R. FERRELL
CHARLES NIBLETT

Invocation was given by Eric Lynch.

IN THE MATTER OF
APPROVING TEXAS UTILITIES MINING COMPANY
RESOLUTION FOR CLOSING AND REOPENING
COUNTY ROAD NW-28 IN PRECINCT 1

Commissioner Mike Price stated, "Texas Utilities Mining Company is requesting an amendment to the closing and reopening of County Road NW-28 in Precinct 1 which was approved September 22, 1997. I have no problem with this."

Motion was made by Commissioner Mike Price and seconded by Commissioner Billy J. Thompson to approve the Resolution regarding closing and reopening of County Road NW-28. Motion carried unanimously. *SEE ATTACHMENT "A"*

IN THE MATTER OF
APPROVING APPOINTMENT OF DESIGNATED
REPRESENTATIVES FOR ON-SITE SEWERAGE
INSPECTOR FOR TITUS COUNTY

Commissioner Mike Fields stated, "I would like to recommend that we create a new position for an On-Site Sewerage Inspector for Titus County. The fee collected for inspections would go into the General Fund and the salary for the inspector would come from the fees collected. I would further recommend that applicants for the position must possess certification as an inspector. We should place this position with the Texas Employment Commission."

Motion was made by Commissioner Thomas E. Hockaday and seconded by Commissioner Billy J. Thompson to create an On-Site Sewerage Inspector for Titus County. The applicants must apply with Texas Employment Commission and possess certification as an inspector. Motion carried unanimously.

IN THE MATTER OF
CONSIDERING NEW TELEPHONE SYSTEM FOR
THE SHERIFF'S OFFICE AND JAIL

Three bids were received. The Court asked Chief Deputy Sheriff Ken Schindley to look over the bids and give the Court his recommendation.

Motion was made by Commissioner Mike Price and seconded by Commissioner Billy J. Thompson to table until next meeting. Motion carried unanimously.

IN THE MATTER OF
APPROVING BIDS FOR 2 USED
TRACTORS FOR PRECINCT 1

Conroy Tractor, Inc. gave a bid for one 6635 4 wheel drive tractor at \$28,861.00 and one horse power two wheel drive TS100 tractor at \$24,645.84. No other bids were received.

Motion was made by Commissioner Mike Price and seconded by Commissioner Thomas E. Hockaday to approve the bids from Conroy Tractor, Inc. for 2 used tractors for Precinct 1. Motion carried unanimously. *SEE ATTACHMENT "B"*

IN THE MATTER OF
APPROVING DEPUTATION OF KENNETH RICHARD
JOHNSON AS DEPUTY SHERIFF

Motion was made by Commissioner Mike Price and seconded by Commissioner Thomas E. Hockaday to approve the deputation of Kenneth Richard Johnson as Deputy Sheriff. Motion carried unanimously.

IN THE MATTER OF
APPROVING SOUTHWESTERN BELL TELEPHONE COMPANY
BURYING CABLE ALONG AND UNDER NW-29B IN PRECINCT 1

Motion was made by Commissioner Mike Price and seconded by Commissioner Billy J. Thompson to approve Southwestern Bell Telephone Company burying cable along and under NW-29B in Precinct 1 accept for boring under roadway and driveways. Motion carried unanimously. *SEE ATTACHMENT "C"*

IN THE MATTER OF
APPROVING BUDGET AMENDMENTS

No amendments were presented by the County Auditor.

IN THE MATTER OF
APPROVING COUNTY OFFICIAL REPORTS

Motion was made by Commissioner Billy J. Thompson and seconded by Commissioner Thomas E. Hockaday to approve reports from County Auditor, Tax Assessor-Collector, Justice of the Peace Precinct 1, Justice of the Peace Precinct 2 and Nortex Voluntary Fire Department. Motion carried unanimously.

IN THE MATTER OF
APPROVING SIGNING PAY ORDERS AND
PAYING BILLS

Motion was made by Commissioner Mike Price and seconded by Commissioner Thomas E. Hockaday to approve signing pay orders and paying bills. Motion carried unanimously.

IN THE MATTER OF
CONSIDERING AUTHORIZING SHERIFF'S DEPARTMENT
TO USE CREDIT CARDS INSTEAD OF CASH FOR OUT OF
COUNTY TRIPS

Ken Schindley stated, "The Sheriff's Department would like permission from the Court to approve credit cards for our out of town trips for officers. I would like to recommend that two cards be issued. Sometimes we have two officers on out of county trips at the same time. I would keep these two cards locked up in my desk and assign them in and out as necessary for officers perform their duties."

Carl Johnson stated, "It is not always possible for cash advances to be ready when officers need them. The request may come at a time when my office is not open. Another time it may be because three court members are not available for their permission to release funds. There are a number of counties that have credit cards for this purpose. I would also recommend to the Court that the Sheriff's Department be allowed to obtain the credit cards. This would be beneficial for record keeping of expenses also."

Motion was made by Commissioner Mike Price and seconded by Commissioner Thomas E. Hockaday to approve the Sheriff's Department to

obtain two credit cards for out of county trips by officers. Motion carried unanimously.

IN THE MATTER OF
APPROVING MINUTES FOR OCTOBER 1998

Motion was made by Commissioner Mike Price and seconded by Commissioner Billy J. Thompson to approve the minutes for October 1998. Motion carried unanimously.

IN THE MATTER OF
HEARING SUSAN NORWOOD CONCERNING
UNITED STATES CENSUS 2000

Susan Norwood stated, "The United States Census started in 1790 to register the population of the United States. The Census helps Congress to distribute 100 Billion dollars of funds each year. These records are keep for 72 years and are confidential information. The Census taking will begin on March 15, 2000 until the end of April. Forms will be mailed out to each towns residents for their completion. The rural county residents and nursing home residents will have a representative come by to collect that information from them. We are asking for your support to promote the filling out and returning of the Census records for your community. I will be glad to speak to any organization. We will be looking for employees of which we hope some will be bilingual. The forms used will be in English as well as Spanish."

Commissioner Mike Fields thanked Susan Norwood for her time and for coming to explain this matter to the Court. *SEE ATTACHMENT "D"*

IN THE MATTER OF
ADJOURNMENT

Motion was made by Commissioner Mike Price and seconded by Commissioner Thomas E. Hockaday to adjourn. Motion carried unanimously.

The above and foregoing minutes for the month of October, were read and approved this 9th day of November, 1998.

Danny P. Crooks
DANNY P. CROOKS, COUNTY JUDGE

Mike Price
MIKE PRICE, COMMISSIONER PRECINCT #1

Mike Fields
MIKE FIELDS, COMMISSIONER PRECINCT #2

Billy J. Thompson
BILLY J. THOMPSON, COMMISSIONER PRECINCT #3

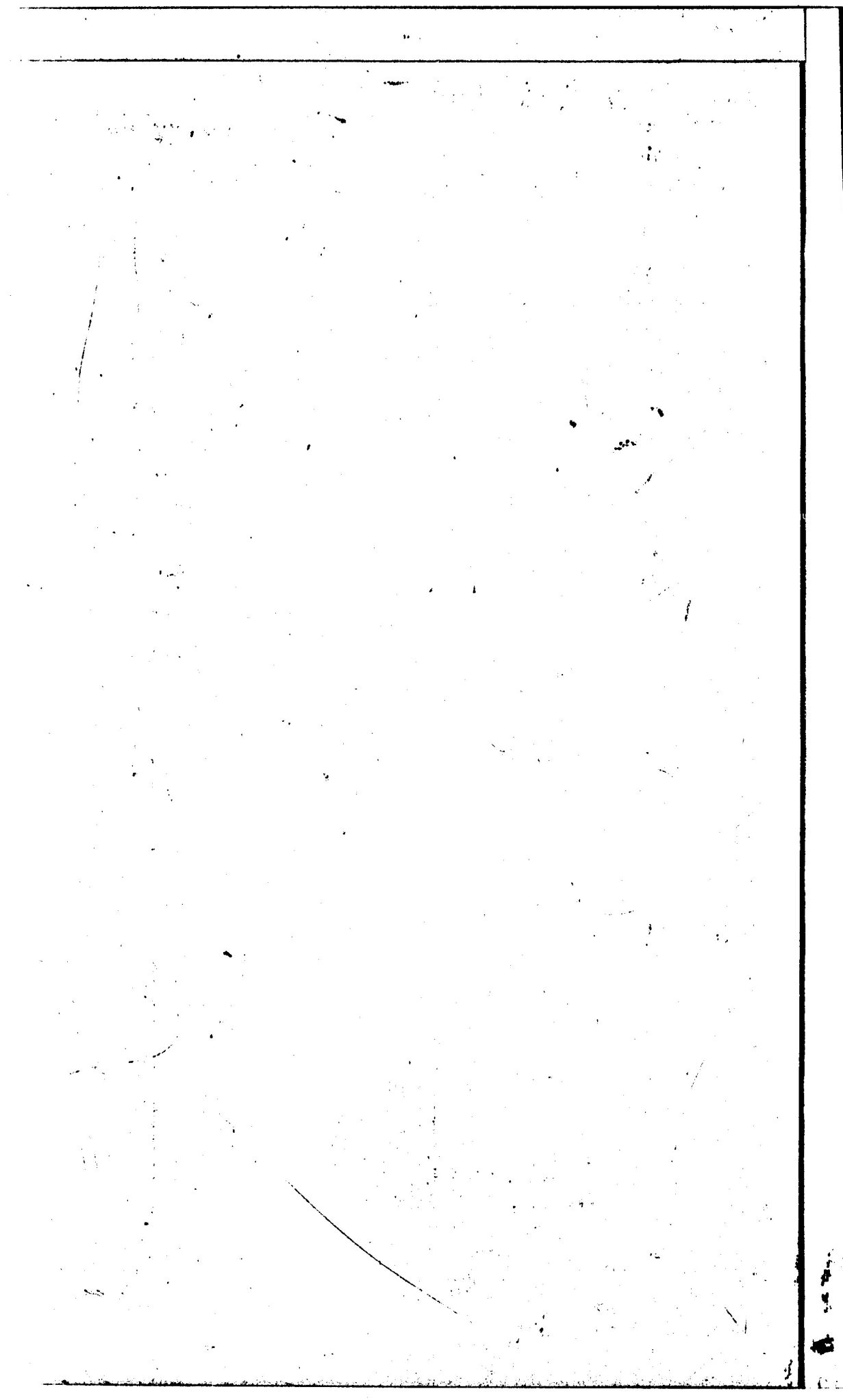
Thomas E. Hockaday
THOMAS E. HOCKADAY, COMMISSIONER PRECINCT #4

Sherry Mars
SHERRY MARS, COUNTY CLERK

COMMISSIONERS' COURT MINUTES FOR OCTOBER, 1998 A.D.
RECORDED ON THE 10th DAY OF NOVEMBER, 1998, A.D.

SHERRY MARS, COUNTY CLERK
TITUS COUNTY, TEXAS

By Jean Crover DEPUTY COUNTY CLERK



11

RESOLUTION NO. 1998-1**A RESOLUTION BY THE COMMISSIONERS' COURT OF TITUS COUNTY, TEXAS,
REGARDING THE RELOCATION OF TITUS COUNTY ROAD NW-28.**

WHEREAS, TEXAS UTILITIES MINING COMPANY ("TUMCO") petitioned this Court for the partial closure of Titus County Road NW-28 and posted said Notice of Request to Close;

WHEREAS, the Commissioners' Court of Titus County ("the Court") acted on the Petition on September 22, 1997, and granted TUMCO's request for a partial closure of Titus County Road NW-28;

WHEREAS, TUMCO made an additional request to this Court for finding with regard to the interest of the public and affected landowners and the Court made such a finding as to the result of the closure of the portion of County Road NW-28;

WHEREAS, TUMCO represented in its petition heard by the Court on September 22, 1997, representations and assurances that TUMCO would, in fact, relocate County Road NW-28 to a location described in its petition;

WHEREAS, TUMCO is requesting that this Court enter a finding that TUMCO would be required to relocate County Road NW-28 and that in so relocation of County Road NW-28, the interest of the public and the affected landowners would be adequately protected;

NOW, THEREFORE, after considering the petition, evidence, and remarks from interested citizens within the county with regard to the interest of the public at large and affected landowners, if any, the Court finds that:

As a condition of the County's agreement to close a portion of County Road NW-28 contained in the actual Order of September 22, 1997, that TUMCO shall construct a relocation of County Road NW-28, described as follows:

BEGINNING at the Southern Boundary line of County Road NW-28, at a point east of the portion which is the subject of this request to close; thence in a southerly direction to a point in the Northern Boundary line of County Road NW-20 across land presently owned or in the possession of TUMCO.

Further, the court finds that:

In relocating County Road NW-28, as shown above, the interest of the public and affected landowners has been adequately protected.

Further, the Court finds that the findings adopted in this Resolution shall be incorporated into that Order entered September 22, 1997, granting TUMCO's request for a partial closure of Titus County Road NW-28.

Upon a vote, all Commissioners voted "aye", and none voted "no" and the County Judge declared this Resolution passed, approved, and adopted as of November 9th, 1998.

SIGNED, ENTERED, AND ORDERED FILED on this 9th day of November, 1998.

Danny P. Crooks

Danny Pat Crooks, County Judge

ATTEST:

Sherry Mars
Sherry Mars, County Clerk

By Jean Crover
Jean Crover, Deputy County Clerk

THE STATE OF TEXAS *
COUNTY OF TITUS *

I hereby certify that the foregoing is a true and correct copy of motion passed by the Titus County Commissioners' Court on the 9th day of November 1998.



Sherry Mars
Clerk of the County Court of
Titus County, Texas

By Jean Crover
Jean Crover, Deputy County Clerk

**CONROY TRACTOR, INC.**

P.O. BOX 312 2809 WEST FERGUSON
MT. PLEASANT, TEXAS 75456-0312
903-572-2629



October 29, 1998

We appreciate the opportunity to bid one 6635 4wheel drive tractor that meets and exceeds the required specifications.

Delivery price is \$28861.00

Sincerely,


Johnny O. Conroy
CONROY TRACTOR CO., INC.

JOC/jlm



CONROY TRACTOR, INC.

P.O. BOX 312 2809 WEST FERGUSON
MT. PLEASANT, TEXAS 75456-0312
903-572-2629



October 29, 1998

We appreciate the opportunity to bid one 80 horse power two wheel drive TS100 tractor that meets and exceeds the required specifications.

Delivery price is \$ 24645.84

Sincerely,

A handwritten signature in cursive script that reads "Johnny O. Conroy".

Johnny O. Conroy
CONROY TRACTOR CO., INC.

JOC/jlm

4607926

DCK
10-23-98

APPLICATION FOR PERMIT

TO: COMMISSIONERS COURT
Mt. Pleasant, Texas 75455

Application is hereby made by Southwestern Bell Telephone Company
for permission to lay buried line along/under that certain segment of the
county road in Precinct # (1) One at the following location(s):

*Place + fare along NW CR 29B
as shown on attached drawings.*

Respectfully submitted,

C. D. Prince 10-15-98
Manager-Engineer Design Date
307 N. Van Buren
Mt. Pleasant, Texas 75455
(903)572-3495

APPROVED - ~~DENIED~~

Danny P. Crook 11/9/98
COUNTY JUDGE Date

Engineering Job Order Information

Job # 4607926

Wire Center: 903572 / MT PLEASANT 572
Location Code: TV2572 / ROUTE 4

TITLE: RELIEF ON S-807, NW C R 29B

Nature & Necessity:

THIS AUTHORIZATION PROPOSES PLACING BURIED CABLE ON
S-807, NW C R 29B TO REPLACE A BLOCKED 6-PR CABLE
WHICH WILL PROVIDE SERVICE FOR A NEW HOUSE UNDER
CONSTRUCTION IN ROUTE 4 OF THE MT PLEASANT EXCHANGE.

C \$'s = 5,255 45C BCDSGROW
X \$'s = 180
M \$'s = 709
P \$'s = 1,609

Input By: mh

ESTIMATED CONTRACT COST: \$ 3,905.

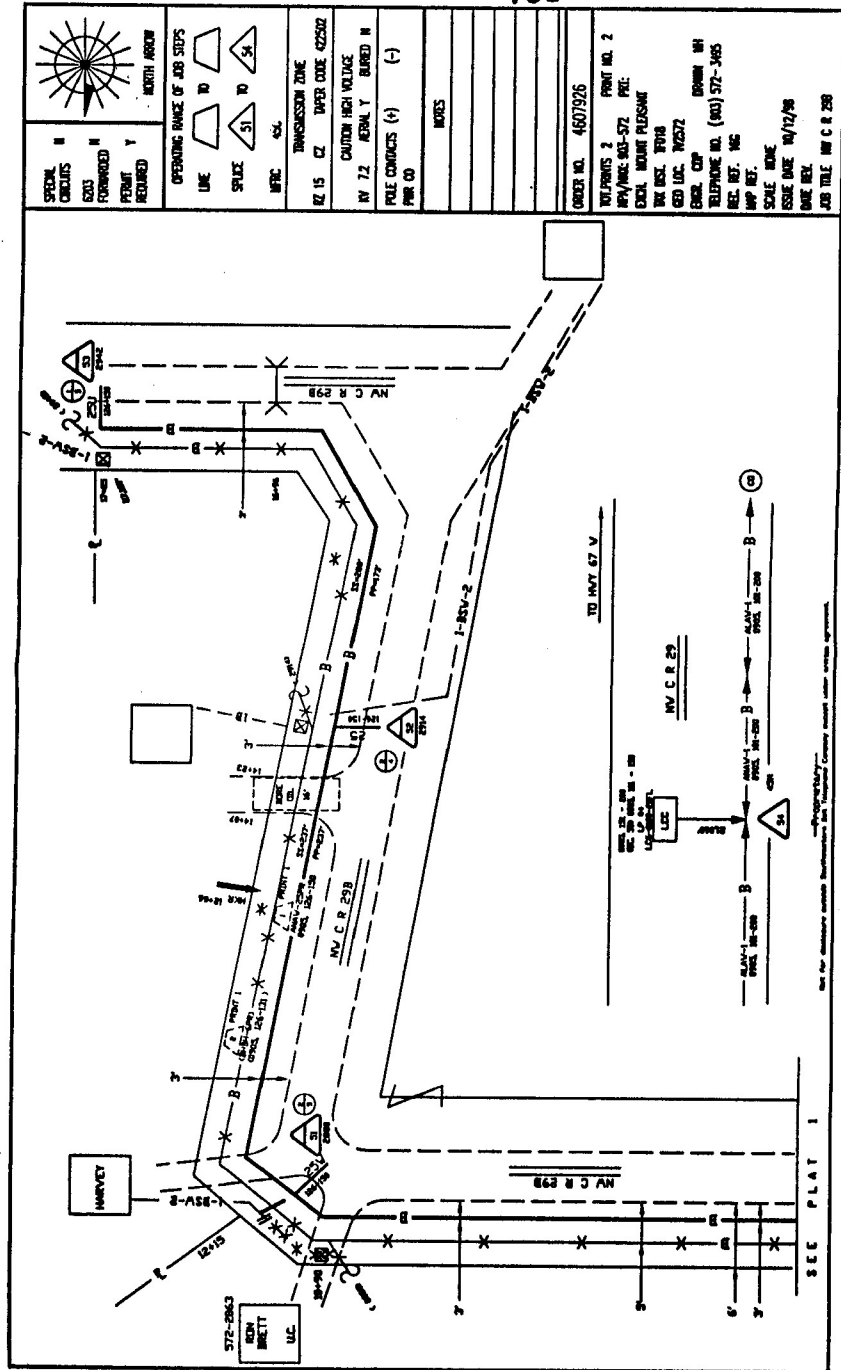
Service Desired Date: 11/13/98

Original Signed By: C. D. Prince *C. D. Prince* 10/14/98
Telephone#: (903)572-3495 Manager Engineering(Design) Date

Original signed SN4 DARE Packet is located at the Engineering Offices

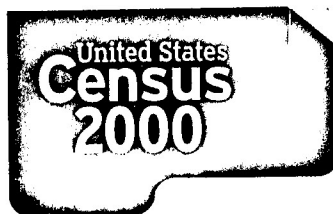
Not to be Disclosed Outside SWBT CO Except Under Written Agreement

Form BDWB



Building Partnerships

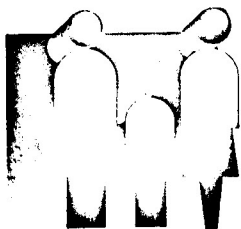
On the Road to Census 2000



Partners — We Need You!

The largest peacetime mobilization in U.S. history is about to take place. And we need you to make it work.

Census 2000 will be the information cornerstone for the next century. Billions of dollars of federal, state and local funds will be spent on thousands of projects across our nation. How and where that money is spent depends on how accurate the census count is. This is your chance to make sure that the new century begins with a complete picture of our nation's people, who they are and where they live.



Your contacts, your knowledge, your standing in the community are the keys to an accurate count.

You understand how decisions about education, health care, job training and business are based on information about children, the elderly, the unemployed or underemployed, how public transportation systems and even traffic control are based on where people work and live. You can reassure your members that the information

collected in the census is protected by law. You know your members and your community.

So, thank you for your help — from lending your good name to providing space or volunteers — whatever you can do to make the Census 2000 picture complete.

How You Can Partner With Us For Census 2000

There are many ways you can help us make Census 2000 a success. Remember: **you make the difference.**

Set the record straight! Help dispel myths about the census; explain to your members about census confidentiality and why the data we collect are important to you and your community.

Get out the help! Help us identify good candidates for census jobs by spreading the word among your members.

Name a champion! Identify a Census 2000 coordinator to develop a partnership action plan that will promote and encourage participation in Census 2000 through your local affiliates and chapters.

Spread the word! Endorse the census publicly in your community; hold press conferences; write newsletters, articles, brochures and fact sheets.

D-3233 (6-98)

Welcome to the first issue of Building Partnerships — a quarterly newsletter for and about the people and organizations that are building partnerships with the Census Bureau. This newsletter is designed to keep you informed and provide you with regular updates on preparations for Census 2000. If you have any questions or comments on what you would like to see in this newsletter, please contact Vicki Glasier on 301-457-2989 (vglasier@census.gov).

United States Census 2000

Suzanne D. Norwood
Community Partnership Specialist
Bureau of the Census

3406 Allen - Tyler, TX 75701
Telephone: 903-593-6009 FAX: 903-593-6727
E-Mail: sdnorwood@aol.com

Volume 1
Issue 1
Summer 1998

Partnership Coordinators — The coordinators give direction to the government, community and media specialists in their efforts to initiate and maintain partnerships. A coordinator for each of the 12 regions is already in place (see back page for the partnership coordinator in your area).

"This is Your Future. Don't Leave it Blank."

Slogan tested in the Census 2000 Dress Rehearsal advertising campaign.

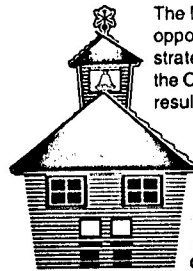
Census 2000 Will Be the First To Be Advertised Widely

In the past, the Census Bureau used *pro bono* (donated) time or space to alert the public that the census was coming and that it was important to respond. By 1990, *pro bono* advertising was no longer effective in getting the message out — the mail-response rate dropped from 75 percent in 1980 to 65 percent. And, a media audit of the 1990 campaign found that the campaign was very uneven — 60 percent of the population was exposed to 91 percent of the advertising while 40 percent was exposed to only 9 percent.

For 2000, *Young & Rubicam, Inc.* (Y&R) and a consortium of four partner agencies have been awarded a contract to develop and manage the advertising campaign for Census 2000. The partner agencies include:

The Bravo Group — a Y&R firm specializing in Hispanic outreach
Mosaica — a Y&R company expert in advertising to Asian audiences
J. Curtis & Company — a firm that targets African-American audiences
Gray & Gray — an American Indian company

The Dress Rehearsal was the first opportunity to test creative and media strategies for Census 2000. Y&R and the Census Bureau are evaluating the results as planning for 2000 proceeds.



Teaching Our Children About the Census

Scholastic, Inc. has been selected to develop, market and distribute curriculum and promotional materials in support of Census 2000 to the nation's teachers

and school children (kindergarten through 12th grade). Their extensive experience in developing successful educational materials and distributing them directly to teachers makes them the perfect partner for our Census-in-the-Schools project.

Our goal is to reach the more than 33 million families with children, as well as adults in English-as-a-Second Language programs, GED and citizenship classes to persuade them to fill out their census questionnaires. The curriculum materials created by Scholastic will demonstrate how useful census data are and how easy it is to participate. Materials already created include teaching guides, classroom activities and materials for students to take home and share with their families.

We Need Your Help in Filling Jobs

If you are an organization with members, affiliates, or customers in rural areas, you may be able to help us recruit individuals to work as census takers in rural America.

One of our early census operations is our Rural Address Listing. The operation occurs in three waves from July 30, 1998, to December 18, 1998. We need approximately 30,000 individuals to verify and update our address lists in rural areas, Puerto Rico and other suburban areas. Hourly salary rates will range from \$6.25 to \$13.75, depending upon the area.

You can assist us in this early operation in any of the following ways:

- ✓ Place an article in your newsletter or do mailings to your customers, members, chapters or affiliates.
- ✓ Display our recruiting posters and brochures in your offices.
- ✓ Show our recruiting tape (a five-minute continuous loop) in waiting rooms and other areas.
- ✓ Place census-job information on your Internet site.

Call
1-888-325-7733
 to find out how
 you can help
 or get more
 information



Be innovative! Use the Internet: post messages on your site and create links to our home page (www.census.gov). Think of other new and exciting ways to get the word out about Census 2000.

Census 2000 Dress Rehearsal Update

In order to conduct a more accurate, less costly Census 2000, the Census Bureau must be sure all of our operations are ready and work as efficiently and effectively as possible. In the Census 2000 Dress Rehearsal, we run through the procedures we plan to use in Census 2000.

This year, we are conducting the dress rehearsal in Sacramento, Calif.; 11 counties in the Columbia, S.C. area; and Menominee County in Wisconsin (most of which consists of the Menominee American Indian Reservation).

New procedures being considered for Census 2000 include user-friendly forms available at many locations, multiple mail contacts with each household, digital capture of forms, as well as sampling and statistical-estimation techniques.

How did our partners get the word out about the census in the dress rehearsal sites? Here are a few examples to show you what can be done...

Inspire your students! The Darlington Complete Count Committee in South Carolina held a "Census slogan and logo contest" at local schools. The final "slo/go" was converted into a poster, reproduced and distributed locally.

Work with the media! An article was printed in the *Charlotte Observer* newspaper regarding dress rehearsal, employment and partnership opportunities. And in Menominee County, school superintendents promoted the dress rehearsal during a radio breakfast show.

Make it an event! Sacramento held a Census Day 1998 multi-cultural

celebration on April 18. Corporate sponsors, along with the city of Sacramento, paid the costs for this event and promoted it among city residents.

Focus on the community!

A presentation was made to the NAACP at a local church. The church agreed to include census recruiting and dress rehearsal information in the church bulletin.

Partnership Specialists On Board In Regions To Assist You

Who in your area can help you with partnership activities? We are gearing up in the regions to hire professionals who can assist you and get partnership efforts under way. It may be helpful for you to know about the partnership positions being filled and what these specialists will be doing:

Government Specialists And Community Specialists — They will work together to:

- establish partnerships with state, local and tribal governments to make sure the Master Address List — the basis for getting a questionnaire to all homes — is correct.

- partner with governments to form state and local Census 2000 Complete Count Committees. Comprised of leaders from a cross section of the community, these committees are the key to making each and every community aware of the upcoming census and persuading everyone to respond.

- form partnerships with local and regional organizations in targeted, historically undercounted and other areas to encourage local census participation.

- encourage organizations to undertake neighborhood efforts to motivate each member of the community to complete the census form and mail it back.

Media Specialists — They will establish partnerships with local media organizations to make newspaper readers, TV viewers and radio listeners aware of Census 2000.

What Can You Do?

Spread the word!

Identify job candidates!

Motivate your community!

Emphasize confidentiality!



Which Partnership Coordinator Can Help You?

If you live here...	Call this Partnership Coordinator:	Telephone #
Alabama, Florida, Georgia	Stephanye Staggers-Profit Atlanta	404-331-0573
Alaska, Northern California, Idaho, Oregon, Washington	Tim Olson Seattle	206-553-5882
Arizona, Colorado, Montana, Nebraska, Nevada, New Mexico, North Dakota, South Dakota, Utah, Wyoming	Pamela Lucero Denver	303-231-5029
Arkansas, Iowa, Kansas, Minnesota, Missouri, Oklahoma	Ben Arzu Kansas City	816-801-2020
Southern California, Hawaii	Reina Ornelas Los Angeles	818-904-6522
Connecticut, Maine, Massachusetts, New Hampshire, New York (except for New York City and the Burroughs), Rhode Island, Vermont	Cesar Monzon Boston	617-424-4977
Delaware, District of Columbia, Maryland, New Jersey (Atlantic, Burlington, Camden, Cape May, Cumberland, Gloucester, Hunterdon, Mercer, Monmouth, Salem, Ocean)	Lyn Kirshenbaum Philadelphia	215-597-8313
Illinois, Indiana, Wisconsin	Anton Seals Chicago	312-353-9697
Kentucky, North Carolina, South Carolina, Tennessee, Virginia	L. Diane Bennett Charlotte	704-344-6621
Louisiana, Mississippi, Texas	Mike Hall Dallas	214-655-3060
Michigan, Ohio, West Virginia	Vince Kountz Detroit	248-967-9524
New York City and the Burroughs, New Jersey (Bergen, Essex, Hudson, Morris, Middlesex, Passaic, Somerset, Sussex, Union, Warren)	Alice Chin New York	212-620-7702 212-620-7703
Puerto Rico	Hector Feliciano Puerto Rico	787-771-3660
U.S. Virgin Islands, American Samoa, Commonwealth of Northern Mariana Islands, Guam	Kim Giesbrecht Suitland, MD	301-457-4038

If you represent a NATIONAL organization and need additional information, contact Laura Sewell on 301-457-2989.

The Census Bureau is an equal opportunity employer.