

**COMMISSIONERS' COURT  
SPECIAL MEETING  
OCTOBER 14, 1996**

BE IT REMEMBERED THAT THE TITUS COUNTY COMMISSIONERS' COURT met in *Special Session* on October 14, 1996, in the Titus County Courtroom with the following members present:

DANNY P. CROOKS .....COUNTY JUDGE  
MIKE PRICE .....COMMISSIONER PRECINCT 1  
MIKE FIELDS .....COMMISSIONER PRECINCT 2  
THOMAS E. HOCKADAY .....COMMISSIONER PRECINCT 4  
JEAN CROVER .....DEPUTY COUNTY CLERK

ABSENT: COMMISSIONER J. W. TERRELL, JR.

PUBLIC AND COUNTY OFFICIALS ATTENDING MEETING:

CARL JOHNSON, AUDITOR  
JUNE ROACH, TAX - ASSESSOR COLLECTOR  
BOBBY LA PRADE, DISTRICT CLERK  
TIM TAYLOR, COUNTY ATTORNEY  
RICKY POOLE, CHIEF SHERIFF DEPUTY  
EVA LAING WALKER, JUSTICE OF PEACE, PRECINCT 1  
THOMAS P. GRESHAM, CONSTABLE PRECINCT 2

TERESA PRICE	ANN RUNDLE
MIKE ROSS	ELMER PATTON
PAULA DYKE	BOB BAKER
BOBBY THOMPSON	NONIE COVEY
RON FISCHER	SHAREE HOOPER
SAM WALKER	PHILLIP CROMWELL
JOHN RYDEN	BURNIS COVINGTON

Invocation was given by Bob Baker.

IN THE MATTER OF  
CONSIDERING BIDS FOR 2 OR MORE  
PATROL CARS FOR SHERIFF'S DEPARTMENT

Bids from Arendale Ford Sales, Inc., Nichols Ford and Cypress Ford, Lincoln, Mercury were received.

Chief Sheriff Deputy Ricky Poole recommended to take the lowest bid from Cypress Ford, Lincoln, Mercury at \$19,711.50 per unit.

Commissioner Mike Fields asked, "Ricky how many units do you feel you need at this time."

Chief Deputy Ricky Poole replied, "We really need 3 units."

Commissioner Fields stated, "I have enough funds at this time to purchase one unit for the Sheriff's Office. I have talked with the Sheriff's Department and they have agreed to sale the old units and replace some of the money in my account."

Motion was made by Commissioner Mike Price and seconded by Commissioner Mike Fields to allow the Sheriff's Office to purchase three 1997 patrol units. Sheriff's budget for cars will pay for two units and Commissioner Mike Fields to pay for third unit. All money received from sale of old units will be returned to Commissioner Fields' funds. Motion carried unanimously. *SEE ATTACHMENT "A"*

IN THE MATTER OF  
HEARING JOHN RYDEN AFLAC  
REGARDING CAFETERIA PLAN

Mr. John Ryden, representative for AFLAC, presented his company's cafeteria plan for county employees. No action was taken.

IN THE MATTER OF  
HEARING SHAREE HOOPER & RON FISCHER  
REGARDING CAFETERIA PLAN

Mr. Ron Fischer and Sharee Hooper, representatives for Colonial, presented their company's cafeteria plan for county employees.

The Court asked both companies to leave literature to be compared. A decision on which cafeteria plan to be offered by payroll deduction would be made next month.

IN THE MATTER OF  
APPROVE DEPUTATION  
STEVEN LYNN MATUS AS A RESERVE DEPUTY

Motion was made by Commissioner Mike Fields and seconded by Commissioner Thomas E. Hockday to approve the deputation of Steven Lynn Matus as a reserve deputy for the Sheriff's Department. Motion carried unanimously.

IN THE MATTER OF  
CONSIDERING RECOMMENDATION OF  
SALARY GRIEVANCE COMMITTEE FOR  
JUSTICE OF THE PEACE, PRECINCT 1

"It is my recommendation that we consider this matter on next year's 1997-1998 Budget," said County Judge Crooks.

IN THE MATTER OF  
CONSIDERING GTE SOUTHWEST, INC.  
REPLACING CABLE BEGINNING APPROXIMATELY  
2500' NORTH OF THE INTERSECTION OF STATE HIGHWAY  
67 AND NW-3, ALONG THE EASTERN PORTION OF THE PUBLIC  
R.O.W. OF NW-3 AND NW-18, THEN CONTINUING EAST ON NW-18  
FOR 950' ALONG THE SOUTHERN PORTION OF PUBLIC R.O.W.

Motion was made by Commissioner Mike Fields and seconded by Commissioner Mike Price to approve GTE Southwest, Inc. to replace existing

cable beginning approximately 2500' North of the intersection of State Highway 67 and NW-3, along the Eastern portion of the public R.O.W. of NW-3 and NW-18, then continuing East on NW-18 for 950' along the Southern portion of the public R.O.W. We will require GTE Southwest, Inc. to bore under any existing roads. Motion carried unanimously. *SEE ATTACHMENT "B"*

IN THE MATTER OF  
APPROVING MINUTES FOR SEPTEMBER 1996

Motion was made by Commissioner Thomas E. Hockaday and seconded by Commissioner Mike Price to approve minutes for September 1996. Motion carried unanimously.

IN THE MATTER OF  
APPROVING BUDGET AMENDMENTS

Motion was made by Commissioner Mike Price and seconded by Commissioner Thomas E. Hockaday to approve budget amendment number 137. Motion carried unanimously. This amendment can be seen in the County Auditor's Office.

IN THE MATTER OF  
APPROVING COUNTY OFFICIAL REPORTS

Motion was made by Commissioner Mike Price and seconded by Commissioner Thomas E. Hockaday to approve reports from Auditor, Treasurer, Tax Assessor - Collector, District Clerk, County Clerk, Justice of the Peace, Precinct 1, Justice of the Peace, Precinct 2, Veterans Service Office, Cookville Volunteer Fire Department, Five Star Volunteer Fire Department, Nortex Fire Department and City of Talco Fire Department. Motion carried unanimously.

IN THE MATTER OF  
SIGNING PAY ORDERS AND PAYING BILLS

Motion was made by Commissioner Mike Price and seconded by Commissioner Thomas E. Hockaday to approve signing pay orders and paying bills. Motion carried unanimously.

IN THE MATTER OF  
APPROVING TEXAS DEPARTMENT OF  
TRANSPORTATION RESOLUTION

Motion was made by Commissioner Thomas E. Hockaday and seconded by Commissioner Mike Price to approve the Texas Department of Transportation Resolution. Motion carried unanimously. *SEE ATTACHMENT "C"*

Tax Assessor - Collector, June Roach reported that the 4th Station had been added to her office. Mrs. Roach stated, "Tax statements are two weeks behind. The reason being that we did not get our figures from the Appraisal District until last week. My girls worked till ten o'clock at night and Saturday in order that we could postand mail all statements by tomorrow. It should not be too long before we start collection the taxes. It was no fault of the Appraisal District new leadership. They have been most cooperative."

The Court agreed the ladies were to be commended for their hard work.

Commissioner Fields reported specifications for bids on landscaping the County Jail would be going out.

IN THE MATTER OF  
ADJOURNMENT

Motion was made by Commissioner Thomas E. Hockaday and seconded by Commissioner Mike Fields to adjourn. Motion carried unanimously.

-----

**The above and foregoing minutes for the month of  
September, 1996 were read and approved this 14th day  
of October, 1996.**

Danny P. Crooks  
DANNY P. CROOKS, COUNTY JUDGE

Mike Price  
MIKE PRICE, COMMISSIONER PRECINCT # 1

Mike Fields  
MIKE FIELDS, COMMISSIONER PRECINCT # 2

J. W. TERRELL, JR. , COMMISSIONER PRECINCT # 3

Thomas E. Hockaday  
THOMAS E. HOCKADAY, COMMISSIONER PRECINCT #4

Sherry Mars  
SHERRY MARS, COUNTY CLERK

**COMMISSIONERS' COURT MINUTES FOR SEPTEMBER, 1996 A.D.  
RECORDED ON THE 15TH DAY OF OCTOBER, 1996 A.D.**

SHERRY MARS, COUNTY CLERK,  
TITUS COUNTY, TEXAS

By Jean Crever DEPUTY COUNTY CLERK

\*\*\*\*\*



## 1997 FORD CROWN VICTORIA

4-DOOR SEDAN FULL SIZE WHITE  
WHITE: FENDERS, HOOD, DECK LID, DOORS, AND TOP  
4.6 L ENGINE: V-8  
ELECTRONIC FUEL INJECTION  
HEAVY DUTY RADIATOR  
130 AMP ALTERNATOR  
FRONT AND REAR BUMPER GUARDS  
2 SPEED WINDSHIELD WIPERS AND WASHER INTERMITTEN  
AM/FM RADIO  
AIR CONDITIONING  
POWER STEERING  
POWER BRAKES  
BELTED POLICE SPECIAL TIRES  
2 OUTSIDE MIRRORS (RIGHT AND LEFT)  
TINTED WINDSHIELD  
CLOCK  
SEATS: HEAVY DUTY (VINYL)  
RUBBER FLOOR MATS  
DOOR: REAR HANDLE INOPERATIVE  
DUAL EXHAUST  
CRUISE CONTROL- TILT STEERING  
WIRED FOR OVER HEAD LIGHTS  
SEATS: FRONT/SPLIT BENCH SEAT  
CALIBRATED SPEEDOMETER  
REAR WINDOW DEFROSTER  
SPARE TIRE: FULL SIZE  
ELECTRIC WINDOWS/ELECTRIC DOOR LOCKS

RESPONSIBILITY FOR THE FENDERS, HOOD, DECKLID, AND REAR FENDERS  
BEING PAINTED BLACK WILL BE THE COUNTY'S.

\$19,711.50 EACH

JAMES MILAM

A handwritten signature in cursive script, appearing to read "James Milam".

203 W. FERGUSON - MT. PLEASANT, TEXAS 75455  
PHONE: 903-572-3486 FAX: 903-572-8902

VOL 22 PAGE 168



ALTERNATE BID

FAX: (313) 398-3783  
16 Pages

Ford Motor Credit Company

The American Road  
P.O. Box 1739  
Dearborn, Michigan 48121-1739

October 10, 1996

Mr. James Miam  
Cypress Ford Lincoln-Mercury

Re: Ford Municipal Finance Program - Quotation for Titus County School District, TX  
*Sheriff Dept*

Dear James:

The following proposal is supplied by Ford Motor Credit Company. The following fixed simple interest rate(s) and payment factor(s) are good until February 1, 1997 and apply to total amounts financed for the range shown below.

This quotation is based on the financing of the following equipment: Three 1997 Ford Crown Victoria P71 Police Sedans for a total amount financed of \$59,134.58.

Price Range (\$25,000-\$74,999)	Term: 2 Years (1st Payment in Advance)		Term: 3 Years (1st Payment in Advance)	
	24 Monthly Pymts.	2 Annual Pymts.	36 Monthly Pymts.	3 Annual Pymts.
Payment Method	5.00%	5.00%	5.00%	5.00%
APR	.043689	.512195	.029847	.349722
Payment Factor	\$2,583.53	\$30,288.40	\$1,784.99	\$20,880.84

To calculate payment amount, multiply total dollar amount financed by the payment factor.

The Ford municipal lease-purchase finance plan has no mileage restriction, no prepayment penalty, requires no security deposit and has a \$1 buyout at term end. At lease inception, the new equipment title/registration would indicate Titus County School District, TX as Registered Owner, and Ford Motor Credit Company, P. O. Box 1739, Dearborn, MI 48121-1739, as Lienholder.

Ford Credit's financing is subject to review and approval of the municipality's two most recent audited financial statements, completed "Fact Sheet" and (signed) "Essential Use" letter along with mutually acceptable documentation. Sample forms and documentation are attached. Sample documents should be reviewed by the Attorney for the Titus County School District.

**Please Note:** An exception to policy is allowed for police-car transactions (police and sheriff's departments only) totaling no more than \$150,000 in outstandings per entity for terms of three years or less. If those conditions are met, no audit reports are needed; only the completed "Fact Sheet" and "Essential Use" forms are needed for credit approval.

Thank you for your interest in the Ford Municipal Finance plan. If you have any questions, please call me at 1-800-241-4199, ext. 14. My fax numbers are (313) 323-2872 or (313) 390-3783.

Sincerely,  
  
Barbara Lyons  
Municipal Finance

Attachments





ARLINGTON

FLEET SALES DEPARTMENT

OCTOBER 10, 1996

BID-POLICE VEHICLES

TITUS COUNTY  
ATTN: AUDITOR

WE ARE SUBMITTING BIDS ON 1996 FORD CROWN VICTORIA POLICE INTERCEPTORS THAT ARE IN STOCK AVAILABLE FOR IMMEDIATE DELIVERY BUT ARE SUBJECT TO PRIOR SALE. ALL FORD POLICE CARS HAVE POWER WINDOWS, TILT WHEEL, STEREO RADIO, REAR WINDOW DEFROSTER AND POWER 4 WHEEL DISC BRAKES AS STANDARD EQUIPMENT. COPY OF FACTORY INVOICE ATTACHED AND PRICING AS FOLLOWS:

\* OPTION #1 19983.00 IN STOCK/1996

FORD MUNICIPAL LEASING IS: 5% INTEREST IS AVAILABLE FOR A LIMITED TIME.

36@ \_\_\_\_\_ APR \_\_\_\_\_ FACTOR      CALL 1-800-241-4199 EXT 11 FOR  
3 ANNUAL \_\_\_\_\_ APR \_\_\_\_\_ FACTOR      CURRENT INTEREST RATES, PAYMENTS  
4 ANNUAL \_\_\_\_\_ APR \_\_\_\_\_ FACTOR      AND ANY QUESTIONS YOU MAY HAVE.

1ST PAYMENT DUE AT TIME OF DELIVERY TO FORD MUNICIPAL.

MULTIPLY FACTOR TIMES PRICE TO GET PAYMENT. COUNTY OWNS AT END OF LEASE FOR 1.00

NOTE: WE CAN HAVE DELIVERED TO MT. PLEASANT BY SCHULTZ INTERNATIONAL, A DRIVEAWAY SERVICE COMPANY FOR A NOMINAL FEE OR COUNTY MAY PICK UP AND SAVE THIS ADDITIONAL CHARGE.

FORD POLICE CARS ARE IN VERY SHORT SUPPLY AND ARE ON A FIRST COME FIRST SERVE BASIS.

VERY, VERY LIMITED SUPPLY ON 1996 POLICE CARS. WE WILL BE OUT OF POLICE CARS IN A VERY FEW DAYS.

WE ARE BIDDING AS CLOSE TO YOUR SPECS AS WE HAVE IN STOCK.

SINCERELY,

*Emmette Cone*  
EMMETTE CONE, FLEET MANAGER  
ARENDALE FORD SALES, INC.

EC/rm



EMMETTE CONE  
FLEET MANAGER



19th Year Member

ARENDALE FORD SALES INC.  
633 N. Hwy. 360  
Arlington, TX 76004  
(817) 261-4261 - Office  
(800) 588-8891  
(817) 633-5031 - FAX

2FALP71W0TX193587

WT	CR V8 VIC POLICE INTERCEPTOR	21040.00	19622.00
IP	SPCL. DLR. ACCT. ADJ. CR.		235.00-
	TOTAL BASE VEHICLE	21040.00	19387.00
68P	VIBRANT WHITE CLEARCOAT		
	BLUE CLOTH FRONT/VINYL REAR		
	PREFERRED EQUIPMENT PKG.122P	465.00	414.00
	.POLICE GROUP 1:		
	.SPEED CONTROL		
	.POWER LOCK GROUP		
99W	.4.6L OMC SEFI V8 ENGINE	NC	NC
44U	.ELECTRONIC AUTO O/D TRANS	NC	NC
T46	.P225/70VRX15 BSW TIRES	NC	NC
45D	LIMITED SLIP DIFFERENTIAL	95.00	85.00
153	FRONT LICENSE PLATE BRACKET	NC	NC
60B	POLICE INTERCEPTOR CREDIT	NC	1200.00-
I	CLOTH BUCKETS/VINYL REAR SEATS	65.00	58.00
	SPECIAL ORDER 52 0579		
	LAMP-MAP (32 CP) W/SWITCH	33.00	27.00
	CODE-WEIGHT ADJUSTMENT	N/C	N/C
	CLAMPS-AIRCRAFT TYPE	32.00	27.00
	COURTESY LAMPS INOPERATIVE	15.00	12.00
	SPOTLAMP (LH) W/PORTOFINO TRIM	177.00	145.00
	AUXILIARY FUSE BLOCK	45.00	37.00
	RR DOOR LCKS/HANDLES INOP.	15.00	12.00
	PWR WINDOWS-DRIVER/PASSENGER	15.00	12.00
	TOTAL VEHICLE & OPTIONS	21997.00	19016.00
	DESTINATION & DELIVERY	605.00	605.00
	TOTAL BEFORE DISCOUNTS	22602.00	19621.00
	@@SPECIAL ADDED DISCOUNTS	300.00-	267.00-
	SCHEDULE A (MEMO)	.00	
TOTAL FOR VEHICLE		22302.00	

\*\* FLEET MARKETING CREDIT 15.50  
 10 U.S. GAL GAS FACTORY  
 PRICED DORA  
 BATCH-ID TE31200614 N RA 2X  
 PRICE LEVEL 616130P71  
 SHIPPING WEIGHT 3782 LBS. VIN: 2FALP71W0TX193587

T2428  
 FA0305X  
 3793

*fleet*  
 wholesale transfer IN  
 (do not clear) IN  
 dealer (do not clear) IN  
 (do not clear) IN  
 wholesale transfer OUT  
 (do not clear) OUT  
 dealer (do not clear) OUT  
 (do not clear) OUT  
 or transferred in)  
 retail OUT  
 (payoff to dealer)

**OPTION #1**

THE INVOICE MAY NOT REFLECT THE FINAL COST OF THE VEHICLE IN VIEW OF THE POSSIBILITY OF FUTURE REBATES, ALLOWANCES, DISCOUNTS AND INCENTIVE AWARDS FROM FORD MOTOR COMPANY TO THE DEALER.				
MSRP/MSDA ASSIGNMENT	INVOICE TOTAL	LESS HOLDBACK FOR DEALER ACCOUNT	LESS APPROX. FINANCING COST FOR DEALER ACCOUNT	NET PRICE TO CUSTOMER
.00	19,369.50	641.00		18,728.50

641.00 10.00 638.00- .00 631.00 19147.00

SOLD TO  
 ARENDALE FORD SALES INC 52D016  
 P.O. BOX 1228  
 ARLINGTON TX 76004

SHIP TO (IF OTHER THAN ABOVE) DATE BY PREPARED 05/31/96 ITEM NUMBER 52-6058 TRAILER IP 02

INVOICE & UNIT IDENTIFICATION NO. 2FALP71W0TX193587 FINAL ASSEMBLY POINT ST THOMAS FINANCE COMPANY AND/OR BANK FORD MOTOR CREDIT 000004  
 THIS INVOICE TO BE USED FOR THE BILLING OF VEHICLES ONLY DEALER COPY

FINANCE - 200 - CREDIT CARD

# NICHOLS FORD

2401 East I-20 at Campus Drive

Fort Worth, TX 76119

(817) 535-FORD

Metro (817) 429-7750

October 9, 1996

Bid for Police Interceptors  
Titus County Sherriff's Department  
Mt. Pleasant, Texas

Dear Sirs:

Thank you for giving us the opportunity to bid for your Police Interceptor need.

We are not bidding order units. We are bidding units that we have in stock and some options may vary from your specifications. Please note the exceptions on your specification sheet and our enclosed descriptive computer printout. Units bid are subject to availability at time of P.O. issuance.

*\$ 20397.25* *JW*

Price is F.O.B. Mt. Pleasant. Price per unit is ~~\$20,752.75~~

If you need clarification, please call. Thank you.


Sincerely,


*Bob Hazelwood*

Bob Hazelwood  
Commercial Sales & Leasing

## NICHOLS FORD

2401 East I-20 at Campus Dr. Fort Worth, TX 76119  
(817) 535-FORD Metro (817) 429-7750

 **BOB HAZELWOOD**  
Account Manager  
Commercial Fleet & Leasing

FAX # (817) 536-3846            Receiver # (214) 909-8217



Prepared By:  
BOB HAZELWOOD  
NICHOLS FORD, INC.  
2401 E. I-20 AT CAMPUS  
FORT WORTH TX 76119  
(817)-536-4147 FAX

Prepared For:  
TITUS COUNTY SHERRIFF'S DEPARTMENT  
POLICE INTERCEPTOR  
MT. PLEASANT TX 75455

Year : 1996  
Make : Ford Cars  
Model: Crown Victoria Police Pkg  
Style: P71 4dr Police Interceptor  
Effective Date: 03/07/96  
PRICE LEVEL CODE 616

\*\*\*\*\* STANDARD EQUIPMENT \*\*\*\*\*

<<< MECHANICAL >>>

- 4.6L SEFI V8 engine
- Unique calibration w/increased idle speed
- 4-speed electronically-controlled automatic transmission w/OD, OD lockout
- Brake-shift interlock
- 3.27 rear axle ratio
- HD U-joints w/3.5" aluminum driveshaft
- Distributorless ignition system
- HD 84 amp-hr maintenance-free battery w/battery saver
- HD 130 amp alternator
- Electronic voltage regulator
- Easy access labeled fuse panel
- Police accessory feed wires-inc: (1) ignition, (1) direct
- Courtesy lamp wiring
- Lower radiator air dam
- Police level extra cooling
- Engine oil cooler
- Transmission oil cooler
- Pwr steering oil cooler
- Coolant recovery system
- Viscous fan
- HD body-frame construction
- Front coil spring suspension
- Rear 4-bar link coil spring suspension
- HD suspension-inc: HD front/rear springs, nitrogen pressurized shock absorbers, front/rear stabilizer bars
- Low friction lube-for-life upper ball joints
- P225/70VR15 all-season SBR BSW tires
- Conventional spare tire & wheel
- HD 15" X 6.5" steel wheel rims
- Full wheel covers
- Speed sensitive variable assist pwr steering
- Pwr 4-wheel disc brakes
- Single stroke parking brake
- Automatic parking brake release w/manual emergency override
- 20.0 gallon fuel tank w/tethered fuel cap
- Dual stainless steel exhaust system
- Scissors jack
- Primary plastic-head ignition key
- Single key locking system

## &lt;&lt;&lt; EXTERIOR &gt;&gt;&gt;

Clearcoat paint w/anti-chip paint primer  
Body-color B & C-pillars  
Concealed body-color bumpers-inc: one piece full wrap cover, bright insert  
Black (white w/white exterior) narrow body-side moldings w/bright insert  
Black rocker panel moldings  
Black windshield/backlight moldings  
Body-color door/bright window frames  
Bright/center design grille  
Low profile dual aero automatic headlamps w/on/off delay  
Dual black heated/fold-away remote control pwr mirrors  
Solar tinted glass  
Rear quarter windows  
Interval windshield wipers w/dual jet fluidic washer system  
Low liftover decklid design w/full reflective applique  
Theft resistant decklid latch  
Gas cylinder hood assists  
Lower body-side urethane protection

## &lt;&lt;&lt; INTERIOR &gt;&gt;&gt;

Cloth reclining bucket seats w/2-way headrests, front armrests  
16 ounce color-keyed carpet  
Driver-side footrest under carpet  
Color-keyed tilt steering wheel w/mounted stalk controls for washer/wipers,  
hi/low headlamp beam, turn signal, flash-to-pass  
Analog gauge cluster-inc: volt, oil pressure, water temp, fuel level  
Electronic 0-140 MPH speedometer  
Trip odometer  
Headlamps-on reminder chimes  
Pwr windows  
Remote decklid release  
Manual air conditioner-inc: R134A refrigerant, positive shut off registers  
Rear window defroster  
Side window demisters  
Electronic AM/FM stereo radio-inc: (4) speakers, clock  
Large lockable, illuminated glove box w/dampened glove box door, embossed  
logo owner's pouch  
Defroster grille w/integral vertical ribs  
Cigar lighter in instrument panel center stack  
12-volt pwr point located near floor heat register  
Dual ashtray-mounted cup holders  
Day/night rearview mirror  
12 ounce carpeting on lower door trim panel  
Front door trim panel w/armrests/map pockets  
Easy access inside door release handles  
Rear ashtrays integral w/door panels  
Cloth covered sun visors w/retention clips  
Molded headliner w/o grab handles  
Dual beam map lights  
Dome light  
Engine compartment light  
Luggage compartment light  
Inner/outer color-keyed one-piece scuff plates for front/rear doors  
Vinyl mat luggage compartment trim  
Deep-well trunk design

## &lt;&lt;&lt; EPA FUEL ECONOMY RATINGS &gt;&gt;&gt;

POLICE 10/09/96

Copyright 1986-96 Chrome Data Corporation. All rights reserved.

October 1996

Page 2

<<< SAFETY FEATURES >>>

Dual air bag supplemental restraint system (SRS)  
 Front/rear outboard 3-point active seat belts w/front comfort adjustment  
 Rear door child safety latches  
 Brake-shift interlock  
 Dual note horn

\*\*\*\*\* FACTORY OPTIONS \*\*\*\*\*

OPTION CODES	DESCRIPTION
P71	4dr Police Interceptor STANDARD EMISSIONS
99W	4.6L SEFI V8 ENGINE (STD)
44U	4-SPEED ELECTRONICALLY-CONTROLLED AUTOMATIC TRANSMISSION W/OD (STD)
122P	PREFERRED EQUIPMENT PKG-inc: pwr door locks, speed control *GROSS*
---	122P PREFERRED EQUIPMENT SAVINGS *DISCOUNT*
P225/70VR15	ALL-SEASON SBR BSW TIRES (STD)
I_	CLOTH FRONT BUCKETS/VINYL REAR BENCH SEATS
***	***** AFTERMARKET POLICE EQUIPMENT MUST NOT BE MOUNTED IN THE AIR BAG DEPLOYMENT ZONE. SEE BROCHURE #FPS-8602 FOR AVAILABLE MOUNTING ZONES -BUCKET SEATS MAY BE REQUIRED- ***** SOLID CLEARCOAT RPO PAINT (STD)
68P	POLICE GROUP 1-inc: pwr door locks, speed control
553	ANTI-LOCK BRAKING SYSTEM/ELECTRONIC TRACTION-ASSIST (N/A w/45D Limited Slip Differential)
127	HEAVY DUTY RUBBER FLOOR MATS *replaces STD carpeting* (N/A w/12H or 12Q floor mats)
FLV	LAMP-MAP (32 CP) W/SWITCH
PCF	CAMPS-AIRCRAFT TYPE
PDI	DECKLID RELEASE-IGNITION CONTROL
PLF	SPOTLIGHT (LH) W/PORTOFINO TRIM
PLL	POWER LOCKS-DRIVER ONLY CONTROLLED
PLN	AUXILIARY FUSE BOX
PR8	RADIO SUPPRESSION
PW4	POWER WINDOWS-DRIVER ONLY CONTROLLED PAINTED PER SPEC-VISABLE EXTER. SURFACES FRONT BUMPER GUARD Destination Charge

COLOR SELECTIONS

P Portofino Blue Interior  
 WT Vibrant White (CC/Met) Exterior #1

POLICE 10/09/96

Copyright 1986-96 Chrome Data Corporation. All rights reserved.

October 1996

Page 3



# Sandlin MOTORS, INC.

N. Jefferson at Hwy. 67 — P.O. Box 32  
Phone (Area Code 903) — 572-3656  
MT. PLEASANT, TEXAS 75456-0032

**Geo**



October 11, 1996

Titus County Commissioners Court

Dear Sirs:

The police car package will not be offered for the balance of the full size model production by Chevrolet. In view of this fact, we will not be able to bid on your specifications as submitted. We would like the opportunity to explore alternative specifications so that we may satisfy your needs in the future.

Thank you for this opportunity and for your past and future considerations.

Respectfully,

Joe W. Sandlin, Jr.





**GTE Southwest  
Incorporated**

**NOTICE OF COMMUNICATION  
LINE INSTALLATION**

DATE SEPT. 30, 1996

TO THE COMMISSIONER'S COURT OF TITUS COUNTY

ATTENTION COUNTY JUDGE:

Formal notice is hereby given that GTE SOUTHWEST INCORPORATED will construct a communication line within the right-of-way of a County Road in WINFIELD TEXAS, TITUS County.

as follows: AN EXISTING GTE CABLE WILL BE REPLACED BEGINNING APPROXIMATELY 2500' NORTH OF THE INTERSECTION OF STATE HWY. 67 AND NW 3, ALONG THE EASTERN PORTION OF THE PUBLIC R.O.W. OF NW 3 AND CONTINUING NORTH FOR APPROXIMATELY 15000' TO THE INTERSECTION OF NW 3 AND NW 18, THEN CONTINUING EAST ON NW 18 FOR 950' ALONG THE SOUTHERN PORTION OF THE PUBLIC R.O.W.

The location and description of this line and associated appurtenances is more fully shown by 7 copies of drawings attached to this notice. The line will be constructed and maintained on the County Road right-of-way in accordance with governing laws.

Notwithstanding any other provision contained herein, it is expressly understood that tender of this notice by the GTE Southwest Incorporated does not constitute a waiver, surrender, abandonment or impairment of any property rights, franchise, easement, license, authority, permission, privilege or right now granted by law or may be granted in the future and any provision or provisions so construed shall be null and void.

Construction of this line will begin on or after OCT 15, 1996.

GTE SOUTHWEST INCORPORATED

By GARY PENDERGRASS  
OSP TECHNICIAN

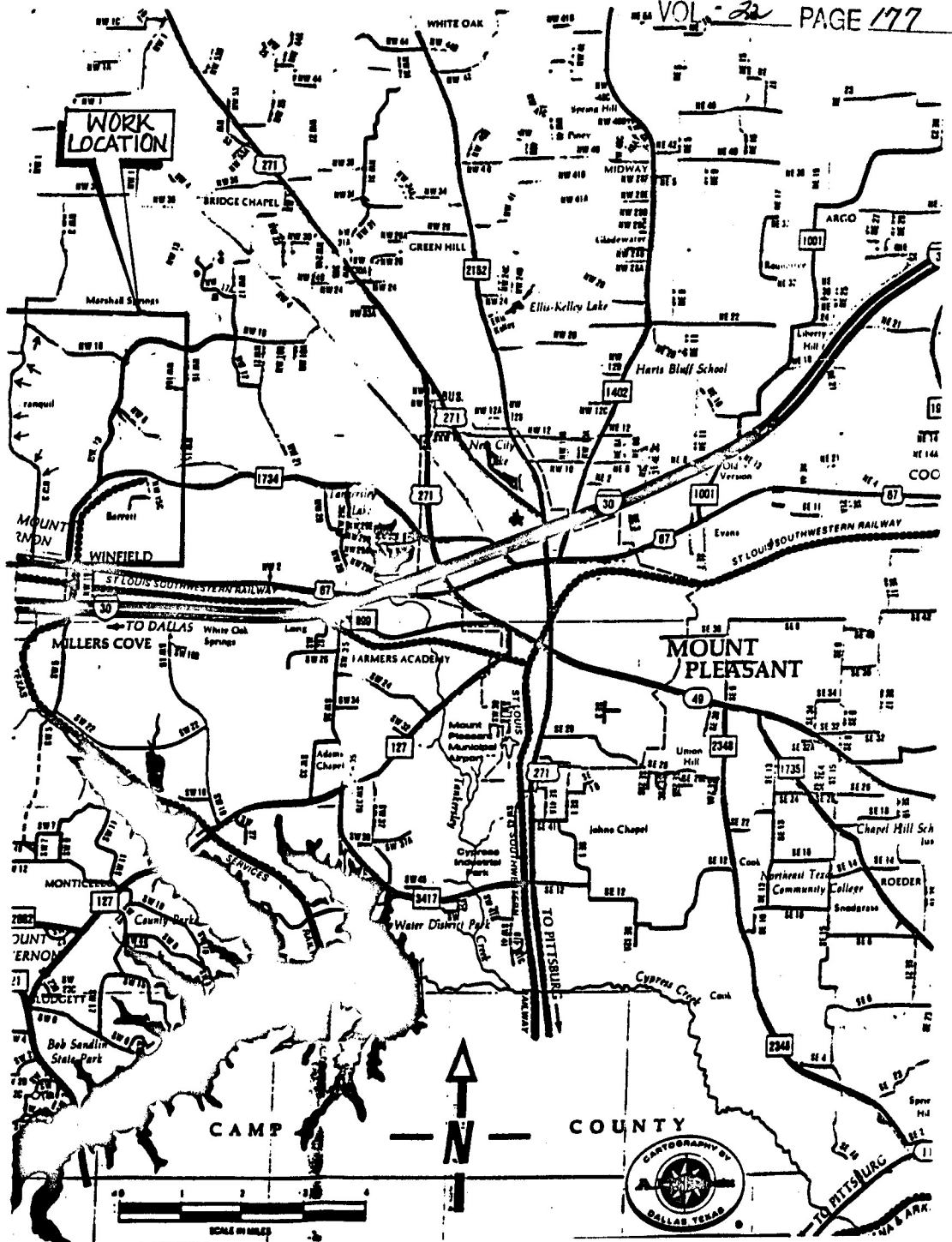
Address P.O. BOX 478  
SULPHUR SPRINGS, TX 75483

APPROVED 10/14/96 BY TITUS COUNTY COMMISSIONERS' COURT.

Danny P. Crooks  
TITUS COUNTY JUDGE DANNY P. CROOKS

OCTOBER 14, 1996  
DATE





**RESOLUTION**

**TEXAS DEPARTMENT OF TRANSPORTATION RESOLUTION**

**WHEREAS,** Texas requires additional funds to maintain and expand its 77,000 miles of state-maintained highways, some 78 percent of which are in need of repair, replacement or modernization; and

**WHEREAS,** the Texas Department of Transportation has reported that more than half of the approved, cost-effective and needed road and bridge projects cannot be funded over the next three years; and

**WHEREAS,** the continued economic growth of Texas, along with the quality of life of its citizens, is imperiled by allowing our excellent road and bridge network to fall below the state's traditional standards; and

**WHEREAS,** more than \$2.5 billion have been diverted each year for the past 10 years from the highway fund and spent on non-highway programs, contrary to the expressed will of state voters, above and beyond the 25 percent of gas tax revenues dedicated to schools; and

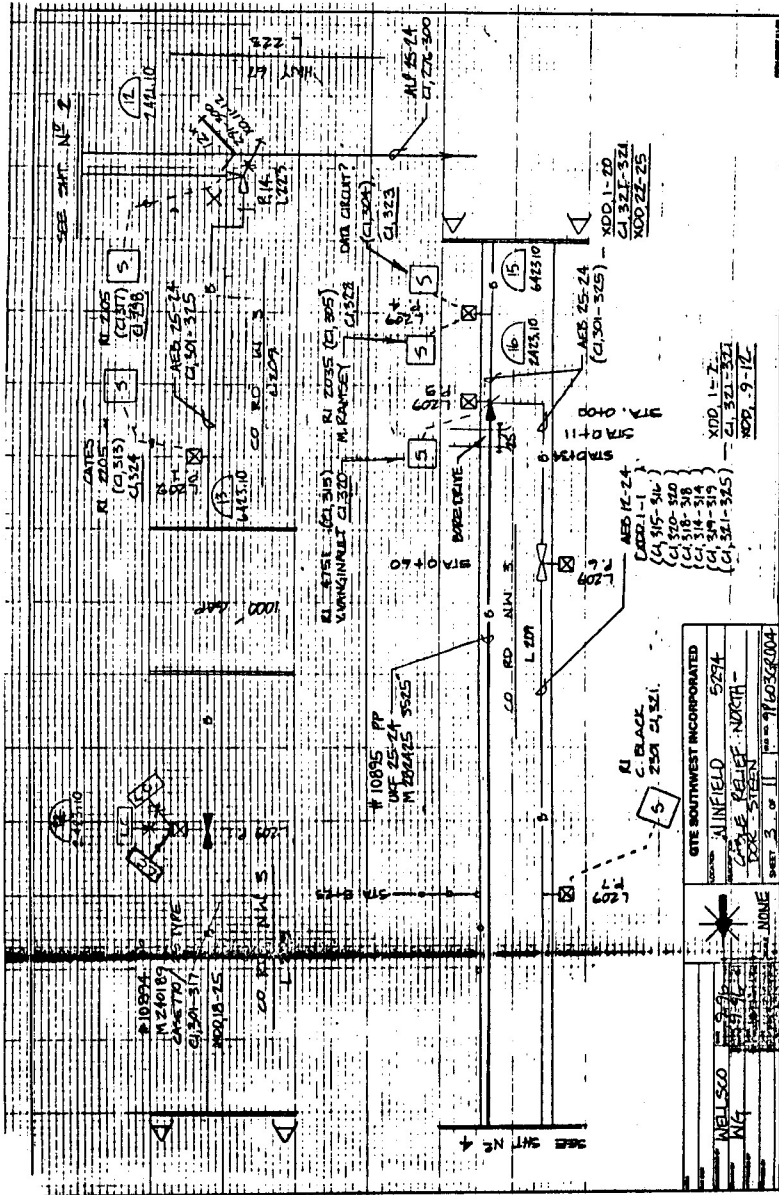
**WHEREAS,** the people of Texas expect their representatives to be responsive to the absolute necessity of protecting our state's \$100 billion investment in its roads and bridges.

**NOW THEREFORE, BE IT RESOLVED** that the Commissioners' Court of Titus County, Texas requests that the 75th Texas Legislature take immediate action to correct the problem of inadequate highway funding by:

- First, taking steps to reverse the trend of diverting highway funds from construction and maintenance to other uses;
- Second, moving immediately to reduce the growing backlog of unfunded highway construction and maintenance projects by assuring adequate funding for those uses;
- Third, providing permanent legislative safe guards against the gradual encroachment on dedicated gasoline tax funds for non-highway uses and the resulting deterioration of Texas' precious, first-rate road and bridge system.

Adopted this 14 day of October, 1996.

*Dennis P. Clark*  
County Judge



GTE SOUTHWEST INCORPORATED  
 5274  
 CALIFORNIA RELIEF NORTH -  
 POOR STREET  
 SHEET 3 OF 11 40363004

XOD 11-7  
 21 321-321  
 XOD 9-12

XOD 1-20  
 21 321-321  
 XOD 21-25

AEB 25-24  
 (C1,301-325)

AEB 12-24  
 XOD 1-1  
 (C1,315-316)  
 (C1,300-320)  
 (C1,318-319)  
 (C1,319-321)  
 (C1,321-325)

RI BLACK  
 C. BLACK  
 2591 21,321

#10895 TP  
 UNF 25-24  
 M 20425

RI 275L (C1,315)  
 VARNINGWALL C1,320  
 RI 2025 (C1,305)  
 M. RANNEY C1,324  
 ONE CIRCUIT? (C1,323)

AEB 25-24  
 (C1,301-325)

RI 2205 (C1,315)  
 CL 324

SEE SHEET NO. 2

SEE SHEET NO. 4

#10894  
 M 20189  
 204270  
 G1,301-317

#2018-75  
 CO. R. 111A1 S. 67

TYPE  
 NAME S. 67

#10895 TP  
 UNF 25-24  
 M 20425

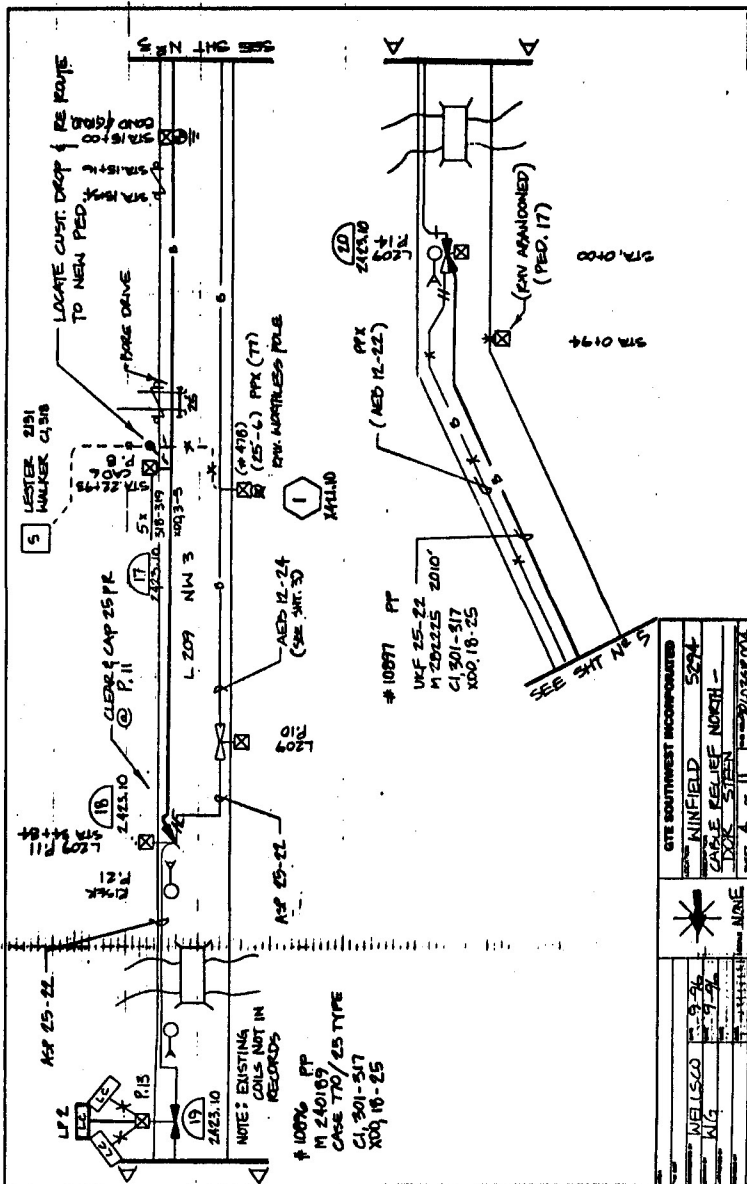
RI 275L (C1,315)  
 VARNINGWALL C1,320  
 RI 2025 (C1,305)  
 M. RANNEY C1,324  
 ONE CIRCUIT? (C1,323)

AEB 25-24  
 (C1,301-325)

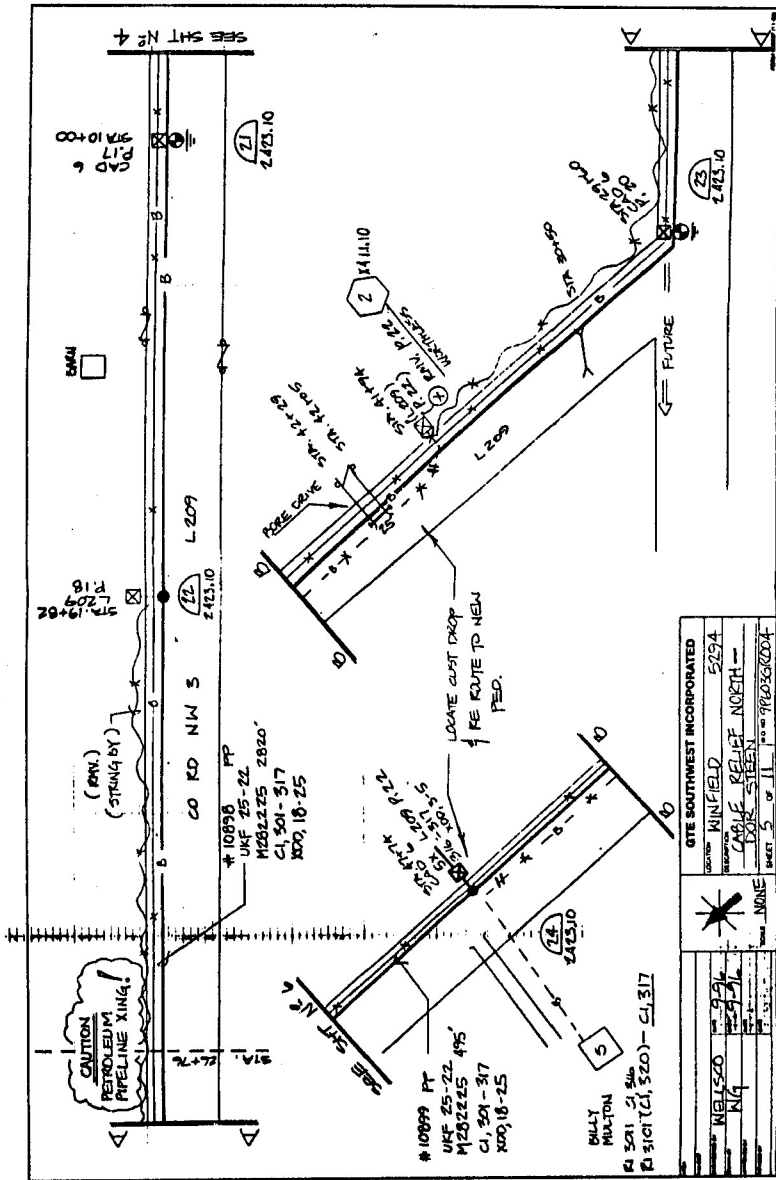
RI 2205 (C1,315)  
 CL 324

SEE SHEET NO. 2

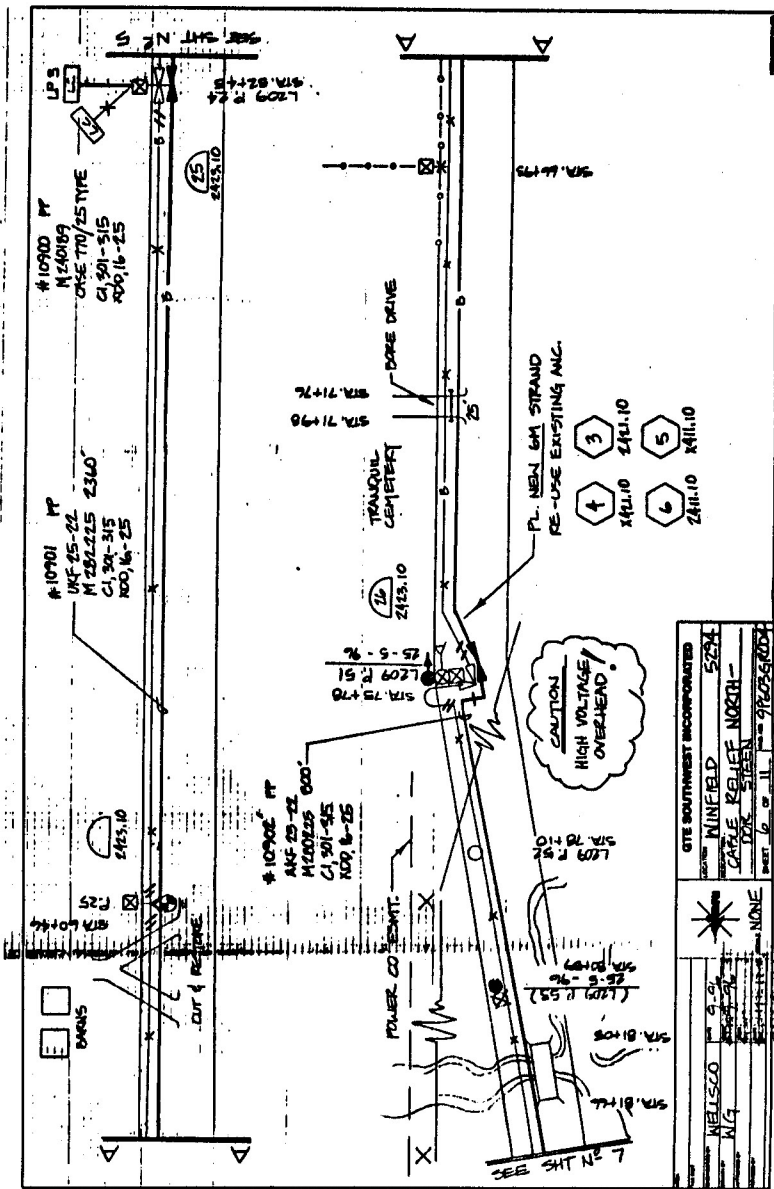
SEE SHEET NO. 4



GTE SOUTHWEST INCORPORATED	
MINIFIELD	5224
CABLE RELIEF NORTH	
DATE	11/15/23
SHEET	4 of 11
PROJECT	740381004
DATE	11/15/23
TIME	10:30 AM
DRAWN BY	J.M.
CHECKED BY	J.M.
IN CHARGE	J.M.
SCALE	AS SHOWN

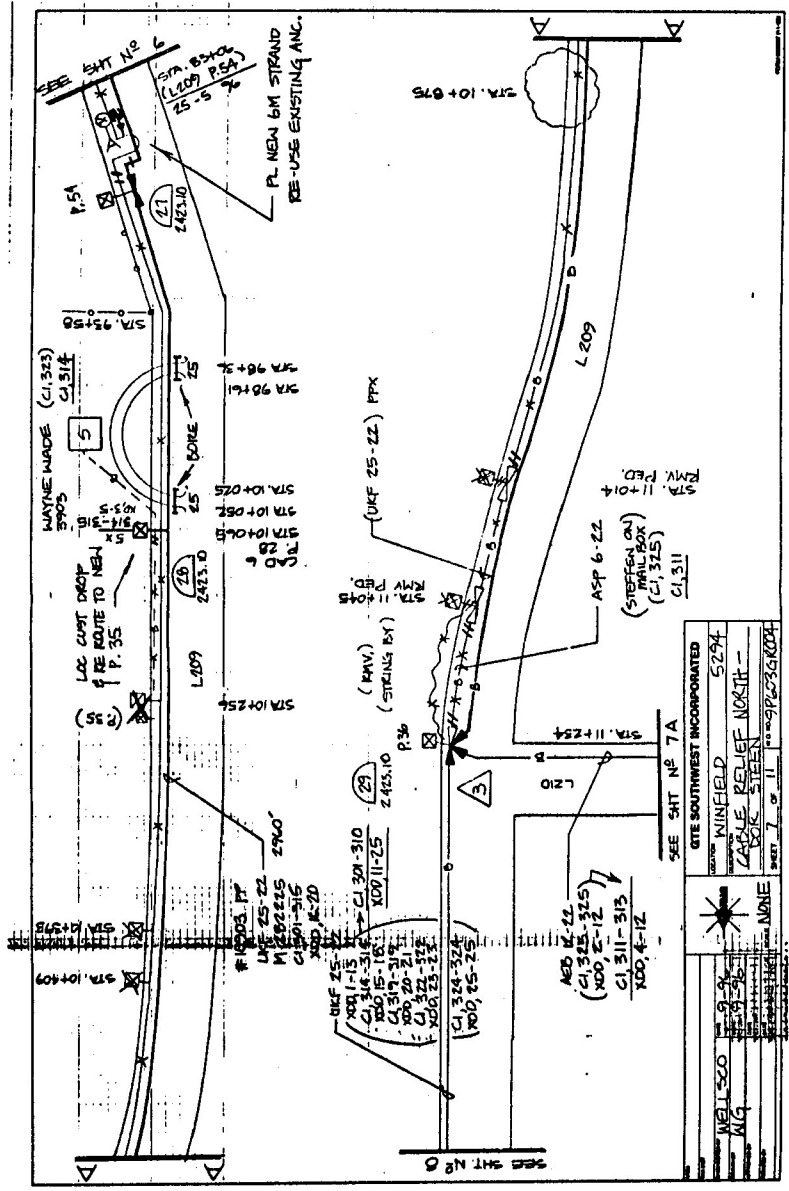


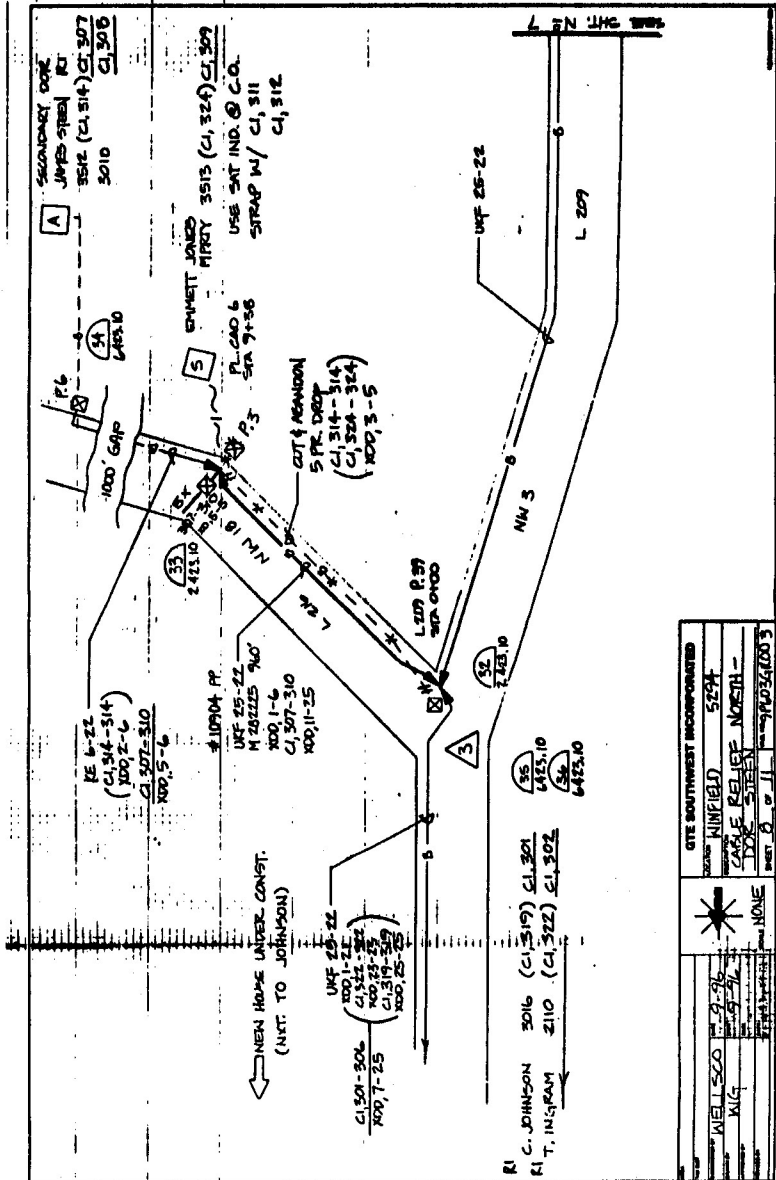
GATE SOUTHWEST INCORPORATED	
OWNER: MINIFIELD	5254
PROJECT: CABLE RELIEF NORTH -	
DESIGNER: COLE STEEN	
SHEET: 5	OF 11
PROJ: PROJ 30004	
# 10899 FT URF 25-22 M202225 495 C1, 301-317 X00, 18-25	
# 10899 FT URF 25-22 M202225 495 C1, 301-317 X00, 18-25	
MILLY MILTON 41 5011 21 5000 42 3101 (21, 5200) - 41, 317	



SITE SOUTHWEST INCORPORATED	
CONTRACT NO.	MINIFIELD 5274
PROJECT	CABLE RELIEF NORTH
DATE	NOV 10 1988
BY	DRK SHEN
SCALE	AS SHOWN
REVISIONS	NONE

- 3 2411.10
- 4 2411.10
- 5 2411.10
- 6 2411.10
- 7 2411.10





GTE SOUTHWEST INCORPORATED			
NAME	WINFIELD 5254		
OWNER	GTE SOUTHWEST INCORPORATED		
TITLE	SITE PLAN FOR SITE		
DATE	JULY 1960		
BY	JULY 1960		
CHECKED	NONE		
APPROVED	NONE		
SCALE	AS SHOWN		
PROJECT NO.	1100541003		