

**IN THE MATTER OF  
ADJOURNMENT**

Motion was made by Commissioner Mike Price and seconded by Commissioner J. W. Terrell, Jr. to adjourn. Motion carried unanimously.

**COMMISSIONERS' COURT  
REGULAR MEETING  
MAY 14, 1990**

BE IT REMEMBERED THAT THE TITUS COUNTY COMMISSIONERS' COURT met in Regular Session on Monday, May 14th, 1990 in the Titus County Court with the following members present:

ALFORD L. FLAMAGAN  
MIKE PRICE  
MIKE FIELDS  
J. W. TERRELL, JR.  
CARL R. FERRELL  
EUGENIA ROACH

COUNTY JUDGE  
COMMISSIONER PRECINCT 1  
COMMISSIONER PRECINCT 2  
COMMISSIONER PRECINCT 3  
COMMISSIONER PRECINCT 4  
COUNTY CLERK

ABSENT: NONE  
and the following proceedings were had to wit:

**IN THE MATTER OF  
APPROVING THE APRIL  
1990 MINUTES**

Motion was made by Commissioner J. W. Terrell, Jr. and seconded by Commissioner Mike Price approving the April, 1990 minutes. Motion carried unanimously.

**IN THE MATTER OF  
AMENDING CONSTABLE'S  
PRECINCT 1 BUDGET**

Motion was made by Commissioner J. W. Terrell, Jr. and seconded by Commissioner Mike Price amending the constable's budget for precinct 1 for \$9,000.00 more for the remainder of 1990 year. Motion carried unanimously.

**IN THE MATTER OF  
SOUTHWESTERN BELL TELEPHONE  
LAYING CABLE IN PRECINCT 1**

Motion was made by Commissioner Mike Price and seconded by Commissioner J. W. Terrell, Jr. approving Southwestern Bell Telephone laying cable in precinct 1 on road NW 41.

VOL 12 PAGE 679

11439299-1165  
978

APPLICATION FOR PERMIT

TO: COMMISSIONERS COURT  
TITUS COUNTY, TEXAS

Application is hereby made by SOUTHWESTERN BELL TELEPHONE  
for permission to lay BURIED line along/  
under that certain segment of the county road in  
Precinct # ONE (1) at the following location(s):

PLACE AND BORE 2" PVC PIPE AND CABLE ALONG  
COUNTY ROAD AS SHOWN ON ATTACHED DRAWINGS.

Respectfully submitted,

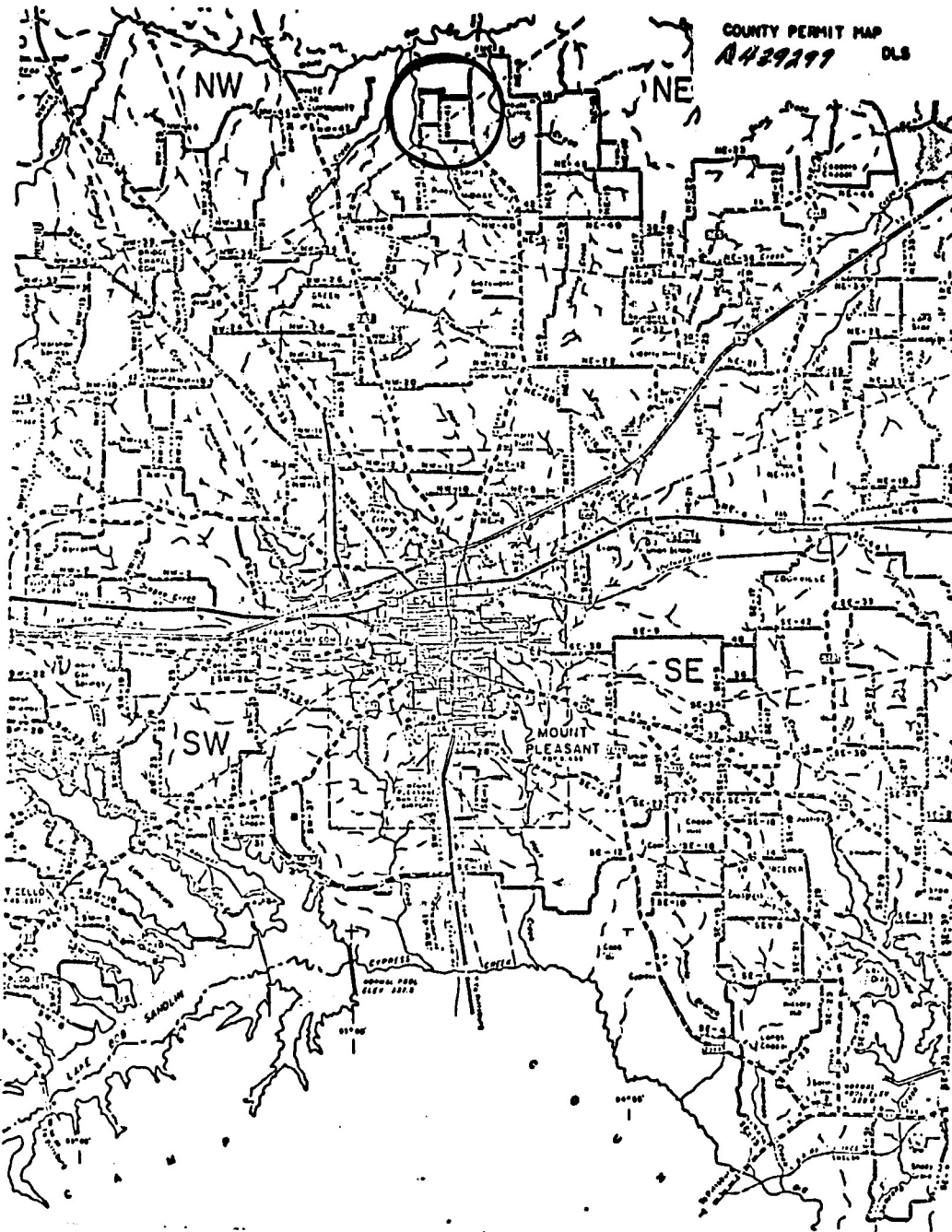
L.L. Shorttrey  
Signature and Title  
MANAGER-ENGINEERING DESIGN

Approved - Denied

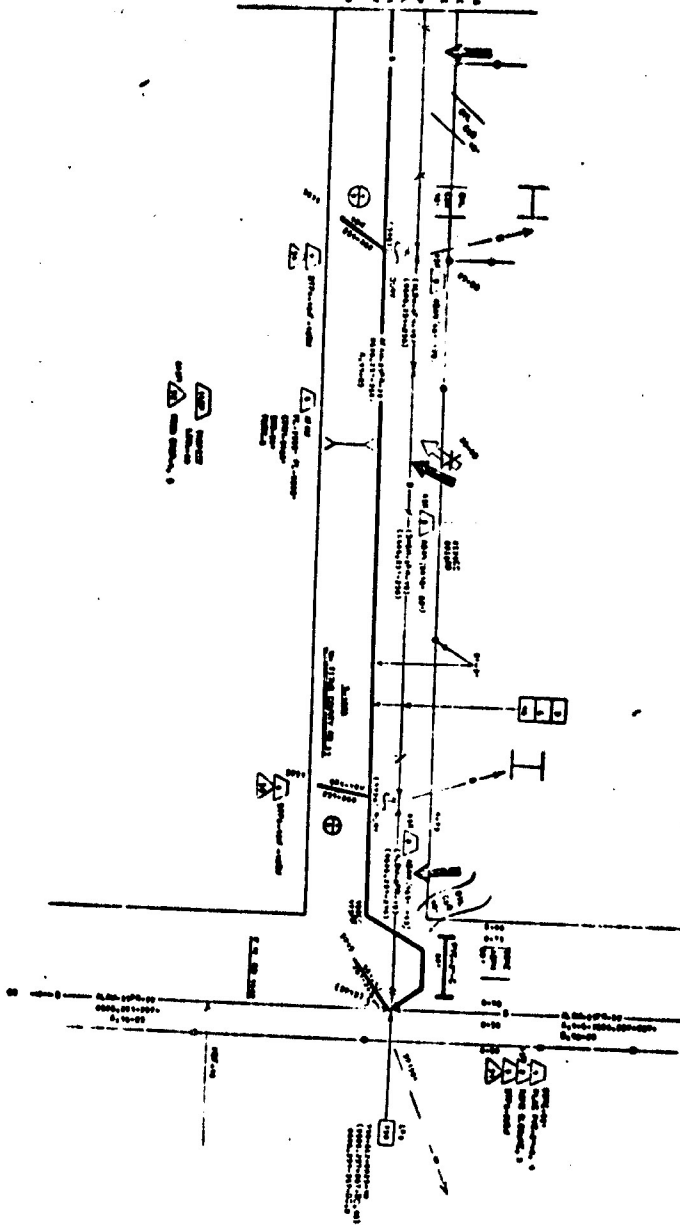
Alfred L. Hansen  
Commissioner, Precinct # 1  
County Judge

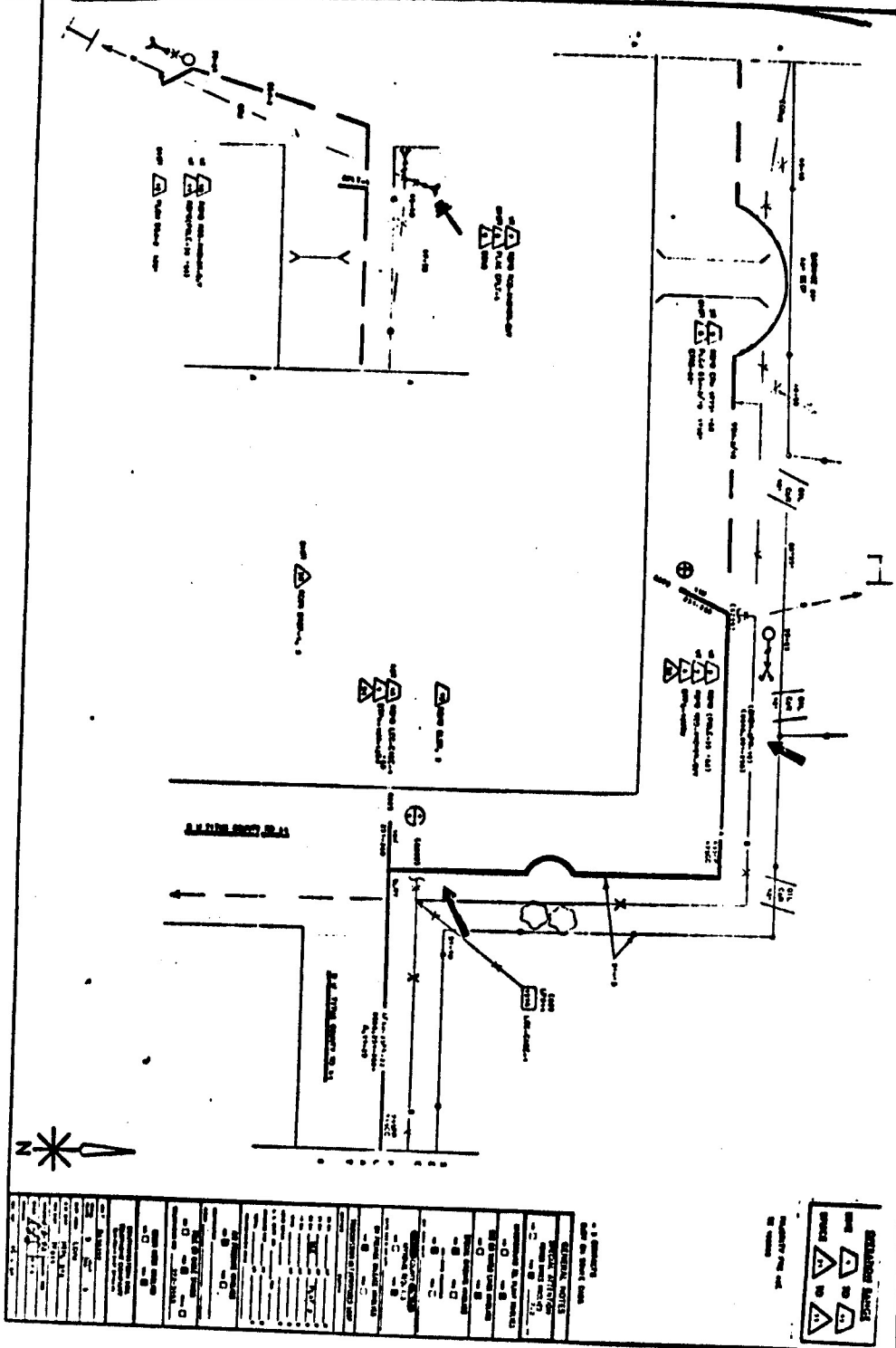
VOL 12 PAGE 680

COUNTY PERMIT MAP  
A429199 DLS



SYMBOL	DESCRIPTION
	1. 100' RADIUS
	2. 50' RADIUS
	3. 10' RADIUS
	4. 5' RADIUS
	5. 2' RADIUS
	6. 1' RADIUS
	7. 0.5' RADIUS
	8. 0.25' RADIUS
	9. 0.125' RADIUS
	10. 0.0625' RADIUS
	11. 0.03125' RADIUS
	12. 0.015625' RADIUS
	13. 0.0078125' RADIUS
	14. 0.00390625' RADIUS
	15. 0.001953125' RADIUS
	16. 0.0009765625' RADIUS
	17. 0.00048828125' RADIUS
	18. 0.000244140625' RADIUS
	19. 0.0001220703125' RADIUS
	20. 0.00006103515625' RADIUS
	21. 0.000030517578125' RADIUS
	22. 0.0000152587890625' RADIUS
	23. 0.00000762939453125' RADIUS
	24. 0.000003814697265625' RADIUS
	25. 0.0000019073486328125' RADIUS
	26. 0.00000095367431640625' RADIUS
	27. 0.000000476837158203125' RADIUS
	28. 0.0000002384185791015625' RADIUS
	29. 0.00000011920928955078125' RADIUS
	30. 0.000000059604644775390625' RADIUS
	31. 0.0000000298023223876953125' RADIUS
	32. 0.00000001490116119384765625' RADIUS
	33. 0.000000007450580596923828125' RADIUS
	34. 0.0000000037252902984619140625' RADIUS
	35. 0.00000000186264514923095703125' RADIUS
	36. 0.000000000931322574615478515625' RADIUS
	37. 0.0000000004656612873077392578125' RADIUS
	38. 0.00000000023283064365386962890625' RADIUS
	39. 0.000000000116415321826934814453125' RADIUS
	40. 0.0000000000582076609134674072265625' RADIUS
	41. 0.00000000002910383045673370361328125' RADIUS
	42. 0.000000000014551915228366851806640625' RADIUS
	43. 0.0000000000072759576141834259033203125' RADIUS
	44. 0.00000000000363797880709171295166015625' RADIUS
	45. 0.000000000001818989403545856475830078125' RADIUS
	46. 0.0000000000009094947017729282379150390625' RADIUS
	47. 0.00000000000045474735088646411895751953125' RADIUS
	48. 0.000000000000227373675443232059478759765625' RADIUS
	49. 0.0000000000001136868377216160297393798828125' RADIUS
	50. 0.00000000000005684341886080801486968994140625' RADIUS
	51. 0.000000000000028421709430404007434844970703125' RADIUS
	52. 0.0000000000000142108547152020037174224853515625' RADIUS
	53. 0.00000000000000710542735760100185871124267578125' RADIUS
	54. 0.000000000000003552713678800500929355621337890625' RADIUS
	55. 0.0000000000000017763568394002504646778106689453125' RADIUS
	56. 0.00000000000000088817841970012523233890533447265625' RADIUS
	57. 0.000000000000000444089209850062616169452667236328125' RADIUS
	58. 0.0000000000000002220446049250313080847263336181640625' RADIUS
	59. 0.00000000000000011102230246251565404236316680908203125' RADIUS
	60. 0.000000000000000055511151231257827021181583404541015625' RADIUS
	61. 0.0000000000000000277555756156289135105907917022705078125' RADIUS
	62. 0.00000000000000001387778780781445675529539585113525390625' RADIUS
	63. 0.000000000000000006938893903907228377647697925567626953125' RADIUS
	64. 0.0000000000000000034694469519536141888238489627838134765625' RADIUS
	65. 0.00000000000000000173472347597680709441192448139190673828125' RADIUS
	66. 0.000000000000000000867361737988403547205596240695953369140625' RADIUS
	67. 0.0000000000000000004336808689942017736027981203479766845703125' RADIUS
	68. 0.00000000000000000021684043449710088680139906017398834228515625' RADIUS
	69. 0.000000000000000000108420217248550443400699530086994171142578125' RADIUS
	70. 0.0000000000000000000542101086242752217003497650434970855712890625' RADIUS
	71. 0.00000000000000000002710505431213761085017488252174854278564453125' RADIUS
	72. 0.000000000000000000013552527156068805425087441260874271392822265625' RADIUS
	73. 0.0000000000000000000067762635780344027125437206304371356964111328125' RADIUS
	74. 0.00000000000000000000338813178901720135627186031521856784820556640625' RADIUS
	75. 0.000000000000000000001694065894508600678135930157609283924102783203125' RADIUS
	76. 0.0000000000000000000008470329472543003390679650788046419620513916015625' RADIUS
	77. 0.00000000000000000000042351647362715016953398253940232098102569580078125' RADIUS
	78. 0.000000000000000000000211758236813575084766991269701160490512847900390625' RADIUS
	79. 0.0000000000000000000001058791184067875423834956348505802452564239501953125' RADIUS
	80. 0.00000000000000000000005293955920339377119174781742529012262821197509765625' RADIUS
	81. 0.000000000000000000000026469779601696885595873908712645061314105987548828125' RADIUS
	82. 0.0000000000000000000000132348898008484427979369543563225306570529937744140625' RADIUS
	83. 0.00000000000000000000000661744490042422139896847717816126532852649688720703125' RADIUS
	84. 0.000000000000000000000003308722450212110699484238589080632664263248443603515625' RADIUS
	85. 0.0000000000000000000000016543612251060553497421192945403163321316242218017578125' RADIUS
	86. 0.0000000000000000000000008271806125530276748710596472701581660658121109008828125' RADIUS
	87. 0.00000000000000000000000041359030627651383743552982363507908303290605545044140625' RADIUS
	88. 0.000000000000000000000000206795153138256918717764911817539541516453027725220703125' RADIUS
	89. 0.0000000000000000000000001033975765691284593588824559087697707582265138626103515625' RADIUS
	90. 0.00000000000000000000000005169878828456422967944122795438488537911325693130517578125' RADIUS
	91. 0.00000000000000000000000002584939414228211483972061397719244268955662846565258828125' RADIUS
	92. 0.000000000000000000000000012924697071141057419860306988596221344778314232826294140625' RADIUS
	93. 0.0000000000000000000000000064623485355705287099301534942798111723891571164131470703125' RADIUS
	94. 0.00000000000000000000000000323117426778526435496507674713990555860558555770657353515625' RADIUS
	95. 0.000000000000000000000000001615587133892632177482538373569952793027792778853286767578125' RADIUS
	96. 0.0000000000000000000000000008077935669463160887412691867849764715138963894266433837890625' RADIUS
	97. 0.00000000000000000000000000040389678347315804437063459339248823575694819471332169189453125' RADIUS
	98. 0.000000000000000000000000000201948391736579022185317296696244117878474097356660845947265625' RADIUS
	99. 0.0000000000000000000000000001009741958682895110926586483481220589392370486783304229736328125' RADIUS
	100. 0.00000000000000000000000000005048709793414475554632932417406102946961852433916521148681640625' RADIUS





IN THE MATTER OF  
APPROVING DEPUTATION OF  
THREE DEPUTY SHERIFFS, FLOYD M.  
DUKE, THOMAS C. SMITH AND KENNETH SCHINDLEY

Motion was made by Commissioner J. W. Terrell, Jr. and seconded by Commissioner Mike Price approving the deputation of three (3) deputy sheriffs: Kenneth Schindley, deputy; Floyd M. Duke and Thomas C. Smith, reserve deputies.

IN THE MATTER OF  
CALLING FOR BIDS ON THE  
COURTHOUSE ANNEX ROOF

Motion was made by Commissioner Mike Price and seconded by Commissioner J. W. Terrell, Jr. to go out for bids on the courthouse annex roof and to receive the bids on May 29, 1990 in Commissioners' Court. Motion carried unanimously.

IN THE MATTER OF  
PAYING BILLS AND  
SIGNING PAY ORDERS

Motion was made by Commissioner J. W. Terrell, Jr. and seconded by Commissioner Mike Price to pay bills and sign pay orders. Motion carried unanimously.

IN THE MATTER OF  
APPROVING REPORTS  
OF OFFICIALS

Motion was made by Commissioner Mike Price and seconded by Commissioner J. W. Terrell, Jr. approving reports of officials. Motion carried unanimously.

IN THE MATTER OF  
ACCEPTING PLAT OF  
CEDAR HILL ESTATES ON  
ROAD SE-3C PRECINCT 2

Motion was made by Commissioner Mike Fields and seconded by Commissioner Mike Price accepting the plat of Cedar Hill Estates on road SE-3C, East Hickory Street. Motion carried unanimously.

IN THE MATTER OF  
ADJOURNMENT

Motion was made by Commissioner J. W. Terrell, Jr. and seconded by Commissioner Carl R. Ferrell to adjourn. Motion carried unanimously.

COMMISSIONERS' COURT  
SPECIAL MEETING  
MAY 29, 1990

BE IT REMEMBERED THAT THE TITUS COUNTY COMMISSIONERS' COURT met in Special Session on Tuesday, May 29th, 1990 in Titus County Courthouse with the following members present:

ALFORD L. FLANAGAN  
MIKE PRICE  
MIKE FIELDS  
J. W. TERRELL, JR.  
CARL R. FERRELL  
EUGENIA ROACH

COUNTY JUDGE  
COMMISSIONER PRECINCT 1  
COMMISSIONER PRECINCT 2  
COMMISSIONER PRECINCT 3  
COMMISSIONER PRECINCT 4  
COUNTY CLERK

ABSENT: NONE  
and the following proceedings were had to wit: